



IMPORTANT INFORMATION	2
TECHNICAL CHARACTERISTICS	3
STANDARD VERSIONS	4
STANDARD VERSIONS WIRING	5
CUSTOM KIT	6
CUSTOM PENDANT STATION ASSEMBLY	7

P03

PENDANT STATION



Before use, read this booklet carefully to acquaint yourself with the features of the product. This booklet is an integral part of the product and therefore must be kept until the product is dismissed.



Giovenzana International B.V. reserves the right to change the features and data shown in this document at any time and without notice. This document cannot therefore be considered a contract with third parties.



P03 pendant stations are designed and manufactured according to IEC international standard and EN European regulations.



Improper installation or tampering can cause serious damage to people and property, therefore installation and maintenance must be carried out by specialized and authorized personnel.



The device is not intended for use in environments with a potentially explosive atmosphere or in the presence of corrosive substances and in salt fog.



Two push button pendant stations for small hoist, in single row:

- Bi-directional, mechanically interlocked
- IP65 double insulation IEC / EN 60529
- Laser engraved symbols comply with EN 60204-1, FEM 9.941
- Shock proof and heat resistant
- Single speed or two speed motor
- Direct motor control 1 kW - 1 speed
- Available in UL/CSA requirements
- Kit version available

IMPORTANT INFORMATION

THE INFORMATION SHOWN ON THIS PAGE IS ESSENTIAL FOR THE CORRECT INTERPRETATION OF WHAT HAS BEEN EXPOSED IN THIS BOOKLET.

Symbols

The following symbols are used in this booklet:



Read carefully before use.



Information note.



ATTENTION, the information highlighted by this symbol is very important.



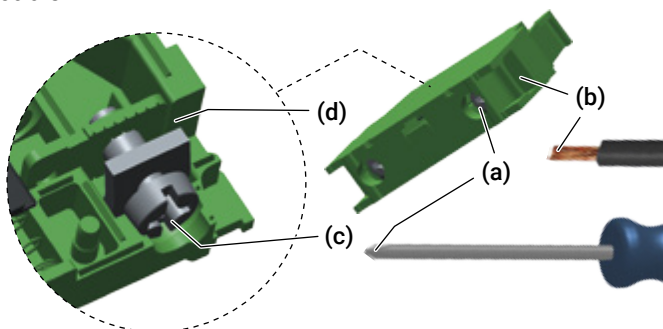
DANGER, the information highlighted by this symbol concerns environments with a potentially explosive atmosphere or the presence of corrosive substances and salt fog.



This symbol highlights the recommended tightening torques to guarantee the degree of protection of the product and to prevent it from breaking.

Contact block with screw terminals

Loosen the screw (a) with a Phillips screwdriver and insert the end of the cable into the opening (b). Tighten the screw with a torque screwdriver to lock the end of the cable. In detail, the action on the screw (c) loosens the stop (d) and allows you to insert the end of the cable.

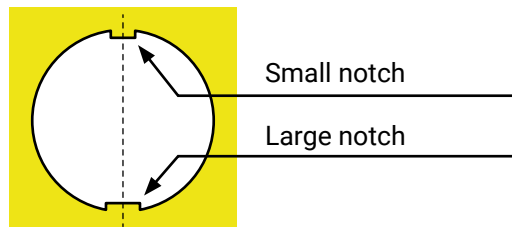


ATTENTION

Connectable section to the contact blocks

flexible conductors	1 or 2	0.5 ... 2.5 mm ² 18 ... 12 AWG
solid conductors	1 or 2	0.5 ... 2.5 mm ² 18 ... 12 AWG
wire peeling length	8 mm	
tightening torque	EN60947-1	1.2 N·m
	UL508	12 lb·in (1.4 N·m)

Orientation and type of operators



The operators' housing holes follow the diagram shown in the figure (**vertical**).



ATTENTION

IT IS DANGEROUS TO OPERATE THE PUSH-BUTTONS AT THE SAME TIME

Tools required (not supplied)



Phillips screwdriver



Flathead screwdriver



Scissors



PCF key (to be purchased separately)



Torque screwdriver with its flat and Phillips heads

TECHNICAL CHARACTERISTICS

Pendant station technical data

Compliant to standards		IEC / EN60947-5-1
Material		ABS
Material group		II
Pollution class		3
Temperature	operating	-25°C ... +70°C
	storage	-30°C ... +70°C
Protection class		IP65
Cable entry		rubber cable sleeve Ø 7 ... 18 mm
Weight	P03.1	440 g
	P03.2	450 g
	P03.3 / P03CD / P03D2	460 g

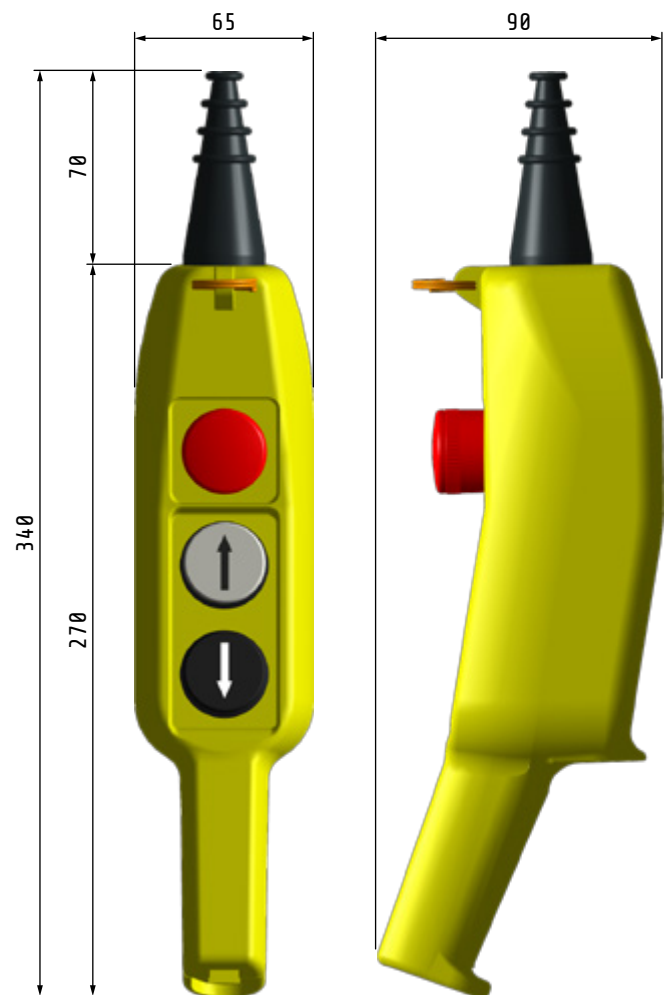
Marking



Versions

- P03.1 - P03.2 - P03.3 - P03CD
- P03.D2

Dimensions



Dimensions in mm
Drawing NOT in scale

STANDARD VERSIONS



P03.1	P03.2	P03.3	P03CD
Single speed	Single speed	Single speed	Single speed *
PL004001 (NC)	PL004001 (NC)	PL004001 (NC)	PL004001CD (NC) PL004001CD (NC) PL004002CD (NO)
PL004002 (NO)	PL004002 (NO) PL004002 (NO)	PL004002 (NO) PL004002 (NO) PL004002 (NO)	PL004001CD (NC) PL004002CD (NO) PL004002CD (NO)
PL004002 (NO)	PL004002 (NO) PL004002 (NO)	PL004002 (NO) PL004002 (NO) PL004002 (NO)	PL004001CD (NC) PL004002CD (NO) PL004002CD (NO)

* High power contacts direct motor control 1 kW 1 ph



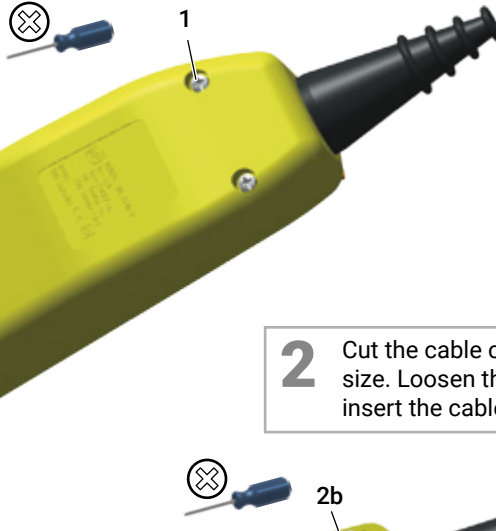
P03D2
Double speed
PL004001 (NC)
PL004010.S (NO-NO) *
PL004010.S (NO-NO) *

* new releases are equipped with p.n. PL004010.S (NO-NO), older are equipped with p.n. PL004010 (NO-NO)

PL004001 (NC) red	PL004001CD (NC) red
PL004002 (NO) green	PL004002CD (NO) green
PL004010.S (NO-NO) * green	

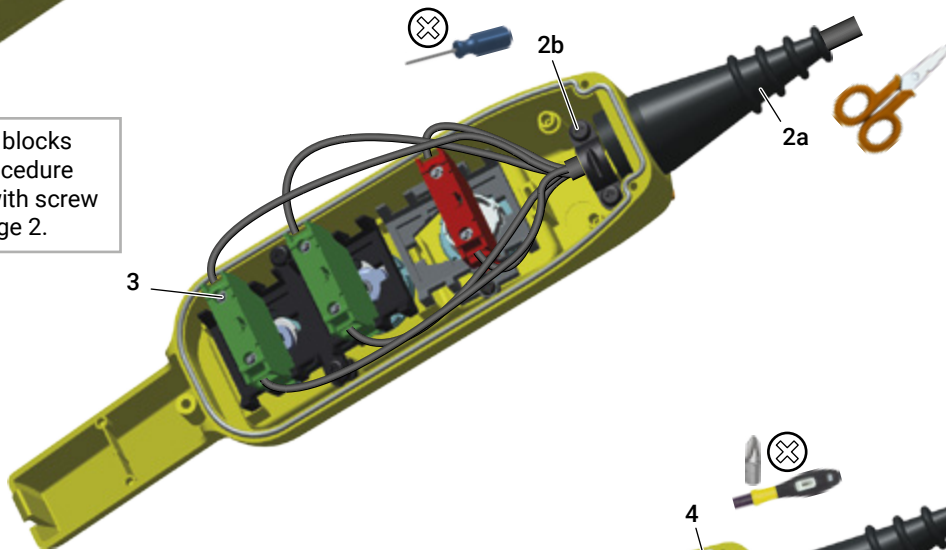
STANDARD VERSIONS WIRING

1 Loosen the screws to remove the bottom of the pendant station.



ATTENTION
Is shown the wiring of a push-button panel with only one contact element per key. The procedure is identical for 2 or 3 contact elements per key.

2 Cut the cable clamp (a) to match the selected cable size. Loosen the screws (b) of the cable holder and insert the cable into the cable clamp.

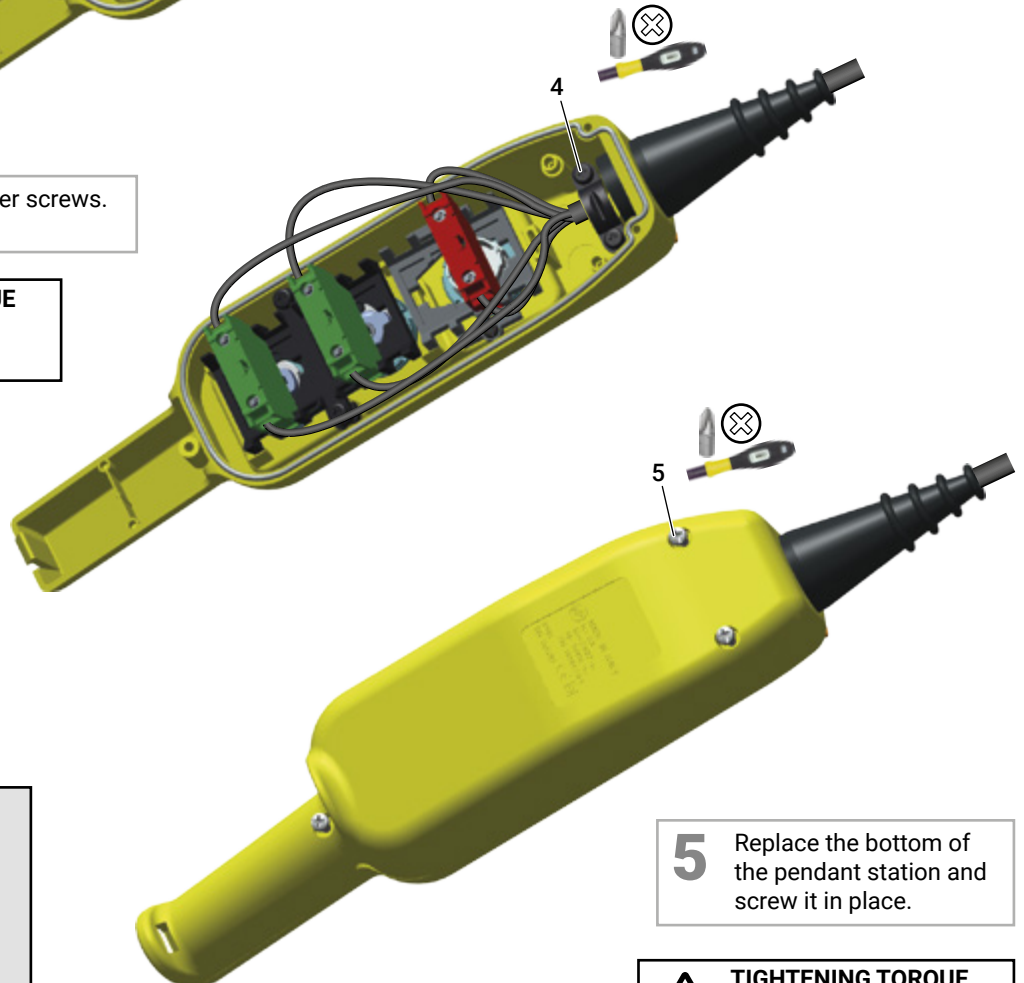


3 Wire the contact blocks following the procedure "Contact block with screw terminals" on page 2.

3

4 Tighten the cable holder screws.

TIGHTENING TORQUE
1.2-1.4 Nxm
10.6-12.4 lbxin



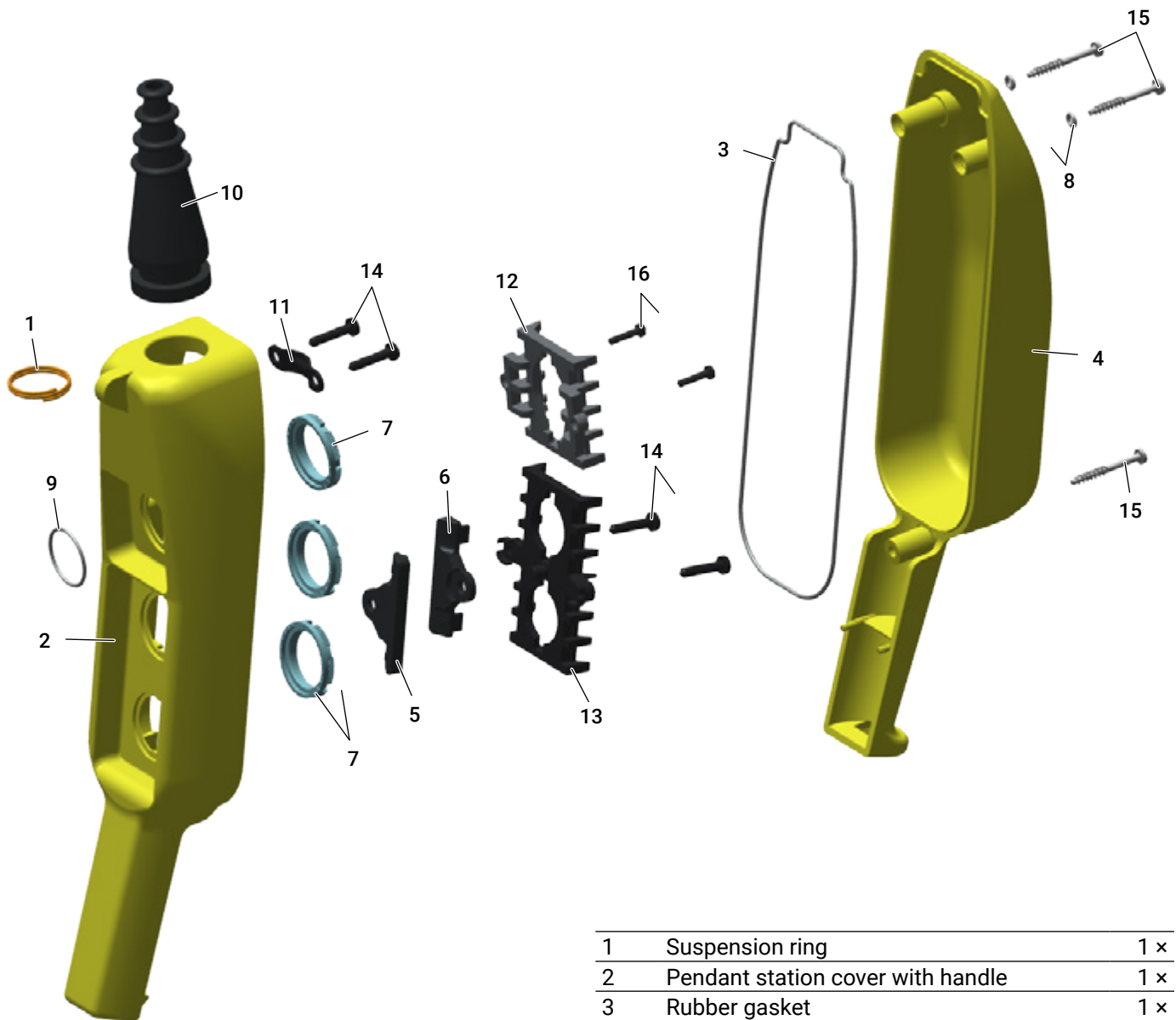
ATTENTION
The sections that can be connected to the contact blocks are shown in the paragraph "Contact block with screw terminals" on page 2.

5 Replace the bottom of the pendant station and screw it in place.

TIGHTENING TORQUE
1.3-1.7 Nxm
11.5-15 lbxin

CUSTOM KIT

P03K



1	Suspension ring	1 x
2	Pendant station cover with handle	1 x
3	Rubber gasket	1 x
4	Pendant station base	1 x
5	Bottom mechanical interlock 16 A	1 x
6	Top mechanical interlock 16 A	1 x
7	Threaded ring nut M22x1	3 x
8	O-ring	2 x
9	O-ring	1 x
10	Cable clamp	1 x
11	Cable holder	1 x
12	4 spring contact block support	1 x
14	Coupling plate with 2 holes	1 x
12	Crosshead self-tapping screw	4 x
13	Self-tapping screw 4x30 partial thread	3 x
14	Crosshead self-tapping screw 3x13	2 x

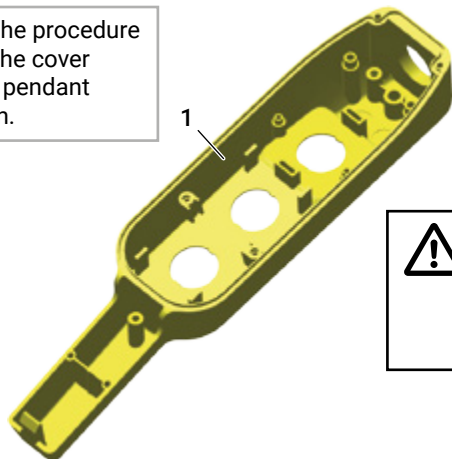
Components excluded that must be ordered separately:

- Operators
- Contact blocks

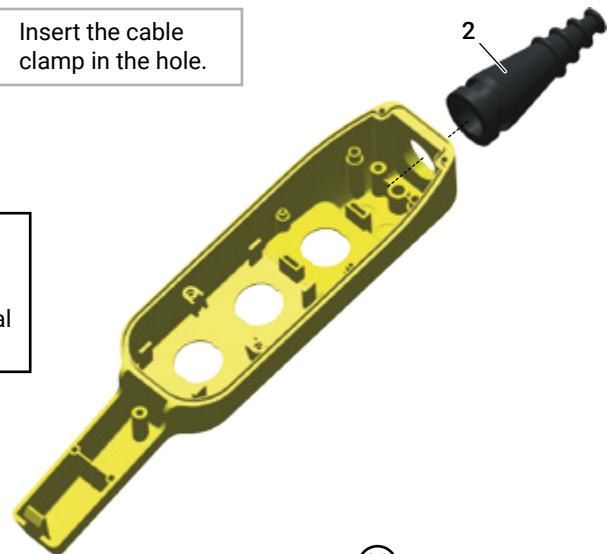
CUSTOM PENDANT STATION ASSEMBLY

Cable clamp and cable holder

1 Start the procedure from the cover of the pendant station.

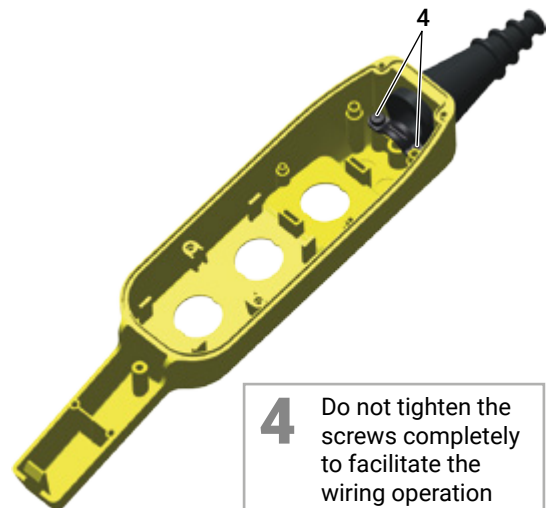
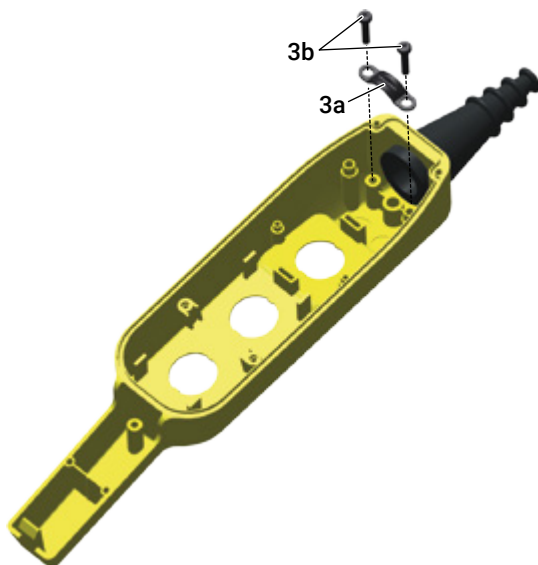


2 Insert the cable clamp in the hole.



ATTENTION
Place carefully the cable clamp to ensure the seal of the panel.

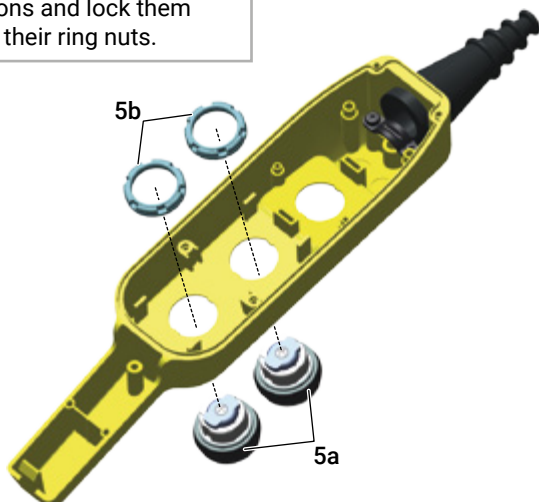
3 Place the cable holder (a) and the 2 fixing screws (b).



4 Do not tighten the screws completely to facilitate the wiring operation (optional).

Operators

5 Position the selected buttons and lock them with their ring nuts.

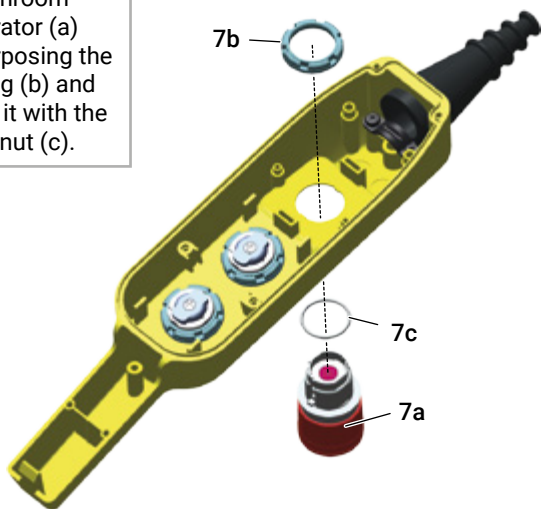


6 Tighten the ring nuts with the PCF key.



TIGHTENING TORQUE
2.25-2.8 N×m
20-25 lb×in

7 Position the mushroom operator (a) interposing the o-ring (b) and lock it with the ring nut (c).



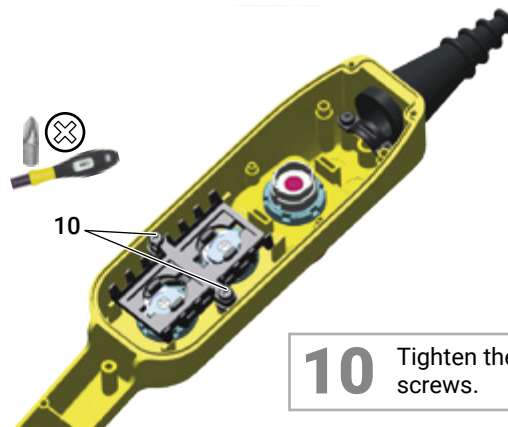
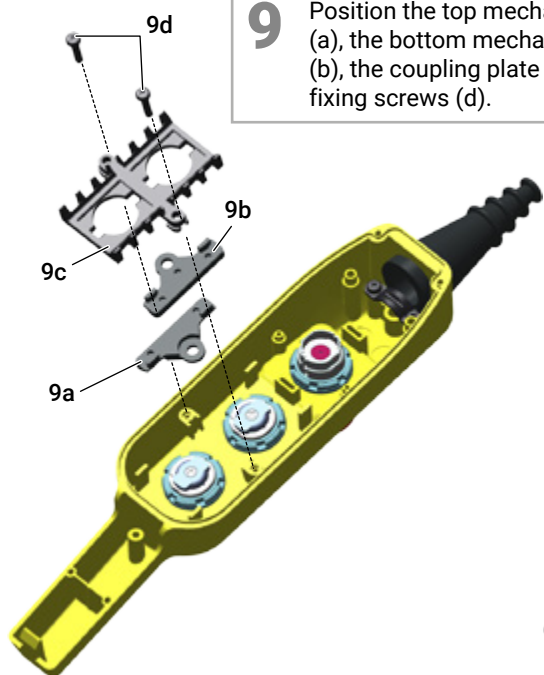
8 Tighten the ring nut with the PCF key.



TIGHTENING TORQUE
2.25-2.8 N×m
20-25 lb×in

Coupling plates

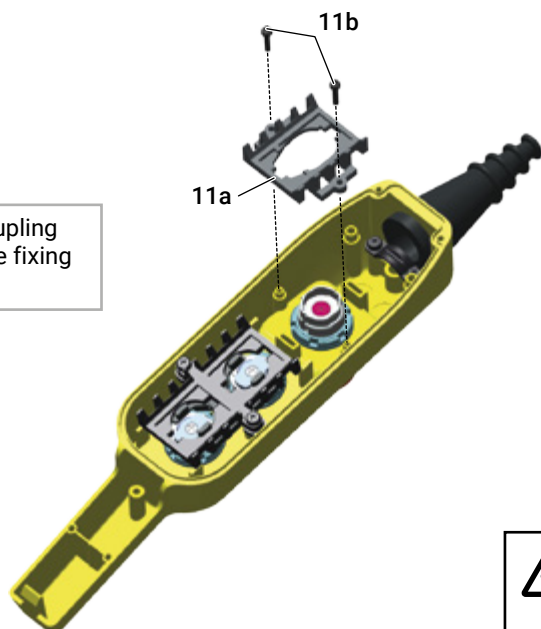
9 Position the top mechanical interlock (a), the bottom mechanical interlock (b), the coupling plate (c) and the fixing screws (d).



10 Tighten the fixing screws.

TIGHTENING TORQUE
1.4-1.6 N×m
12.4-14 lb×in

11 Position the coupling plate (a) and the fixing screws (b).

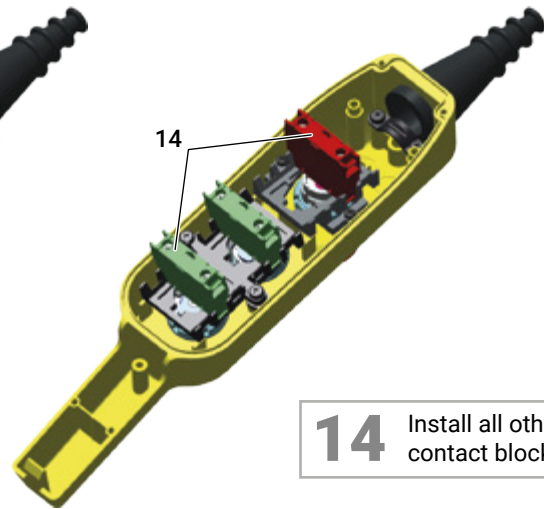
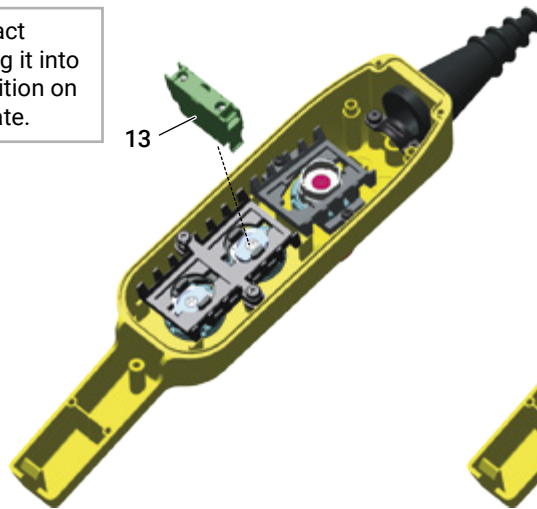


12 Tighten the fixing screws.

TIGHTENING TORQUE
1.4-1.6 N×m
12.4-14 lb×in

Contact blocks

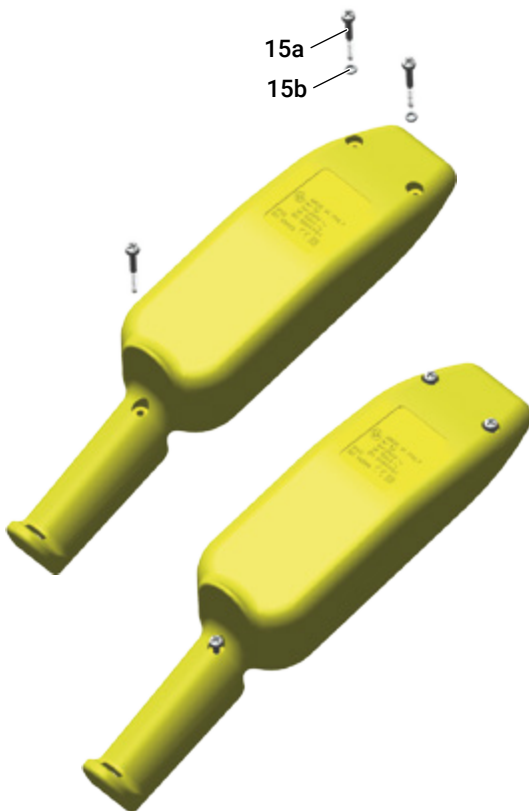
13 Install the contact block by pushing it into the desired position on the coupling plate.



14 Install all other chosen contact blocks.

Pendant station base

15 Place the fixing screws (a) and the o-rings (b) in the respective holes in the pendant station base.



Wiring



ATTENTION

Wire as shown in the paragraph "TECHNICAL CHARACTERISTICS" on page 3



ATTENTION

Wiring is optional and can be carried out later.



ATTENTION

The sections that can be connected to the contact blocks are shown in the paragraph "Contact block with screw terminals" on page 2.

Close the pendant station

16 Place the sealing gasket into the groove.



ATTENTION
Carefully position the sealing gasket to ensure tightness.

16

17 Position the base of the pendant station.

17

18 Tighten the fixing screws of the base of the pendant station.



TIGHTENING TORQUE
1.3-1.7 Nxm
11.5-15 lbin



18

