



LED STRIP AND ACCESSORIES .....	2
INSTALLATION .....	3
Warnings .....	3
Preliminary operations .....	3
LED strip wiring .....	3
Connectors installation .....	4
Upper side tensioner mounting .....	4
Lower side tensioner mounting .....	5
Wall plugs mounting .....	6
TECHNICAL CARACTERISTICS .....	7
LAYOUT EXAMPLE .....	8

# GSL30

# GSL60

## SILICONE LED STRIP



Before use, read this booklet carefully to acquaint yourself with the features of the product. This booklet is an integral part of the product and therefore must be kept until the product is dismissed.



Giovenzana International B.V. reserves the right to change the features and data shown in this document at any time and without notice. This document cannot therefore be considered a contract with third parties.



Any improper installation or any tampering of the device may cause serious personnel injury or property damage, therefore, the installation and maintenance must be performed by specialized and authorized personnel.



The use of this device is not allowed in environment with a potentially explosive atmosphere or in presence of corrosive substances and in salt spray.



### ATTENTION

Before any installation or maintenance operation, disconnect the power supply to the system. Before restoring the power supply, make sure that all connections to the device have been made correctly. Giovenzana International B.V. disclaims any responsibility for any damage to things and people caused by non-compliance with the rules described here.

## LED STRIP AND ACCESSORIES



GSL30 / GSL60  
Flexible LED strip p.4



GSLC007  
Sealant (90 ml)



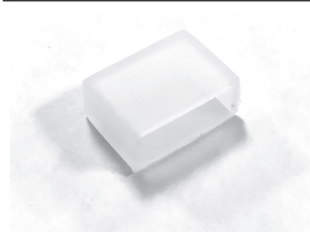
GSLC001 p.3  
Power connection cable  
(screws not provided,  
1×GSLC004 needed)



GSLC008 p.3  
Power connection kit:  
- 1 × power  
connection cable  
- 1 × silicone cap for  
LED strip live end  
- 1 × silicone cap for  
LED strip dead end  
- 1 × protection and  
screws for connectors  
- 1 × sealant (5 ml)



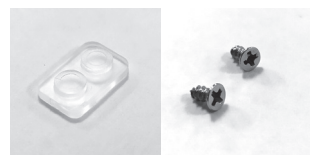
GSLC002 p.3  
Silicone cap for LED  
strip live end



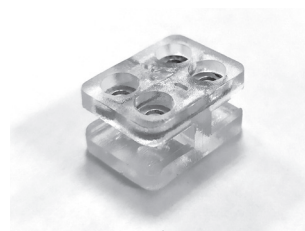
GSLC003 p.3  
Silicone cap for LED  
strip dead end



GSLC009 p.4  
Connection cable  
(screws not provided,  
2 × GSLC004 needed)



GSLC004 p.3  
Protection and screws  
for connectors



GSLC010 p.4  
Bridge connector  
(screws not provided,  
2×GSLC004 needed)



GSLC005 p.4  
LED strip tensioners  
(2 pieces)



GSLC011 p.4  
"T" shaped connector  
(screws not provided,  
3×GSLC004 needed)



GSLC006 p.6  
Wall plug



GSLC012 p.4  
Cross shaped connector  
(screws not provided,  
4×GSLC004 needed)

# INSTALLATION

## Warnings



### ATTENTION

DO NOT modify, deform or cut the strips or any of the components provided. AC strips are designed to work directly plugged into an AC source. No power supply unit is needed. To avoid any malfunctions of the system, and to protect against electrical shock, fire, or physical injury, please observe the following: This system has been designed to work at 240 VAC. Connection to a line voltage other than that may create a safety and fire hazard and may damage the system. If you are unsure of the type of power supply, consult your local power company or a qualified service technician.



### ATTENTION

DO NOT handle the components with wet hands to avoid electrical shock and/or damages to the system. Always make sure the LED strip is disconnected from the power source before cutting, connecting, mounting, or modifying it in any way.



### ATTENTION

DO NOT operate with the LED strip tightly coiled. Do not puncture, cut, shorten, or splice the LED strip (except where marked). For outdoor use, make sure that all connections and the end cap in the last segment are tightly secured to preclude the entry of water.



### ATTENTION

DO NOT look directly into the LEDs when lit. They are powerful and could damage your vision.



### ATTENTION

ONLY AUTHORIZED PERSONNEL must handle and install the strips. Follow national electric codes and regulations during installation.

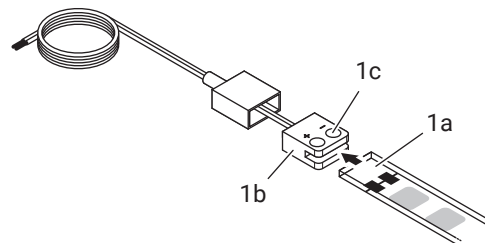
## Preliminary operations

- Measure the installation and mark the anchor points. We recommend 1.5 metres between anchor points for vertical sections and 0.5 metres for horizontal sections.
- The area must be free of dust and dirt for adequate adhesion. Clean only with a dry or slightly damp cloth. DO NOT use any acid or alkaline liquids, cleaning agents, or solvents.
- Select all the accessories and components needed to complete the installation.
- Cut the strips using a sharp tool only on the indicated areas.

## LED strip wiring

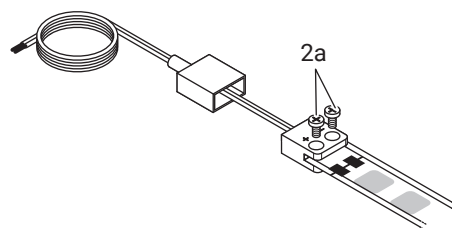
1

Insert the end of the LED strip (a) inside the connector (b). The copper paths must be positioned below the screw holes (c).



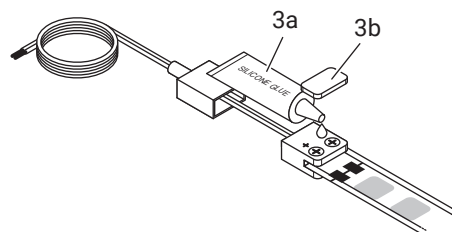
2

Fasten the connector to the LED strip with the screws (a) provided with the protection.



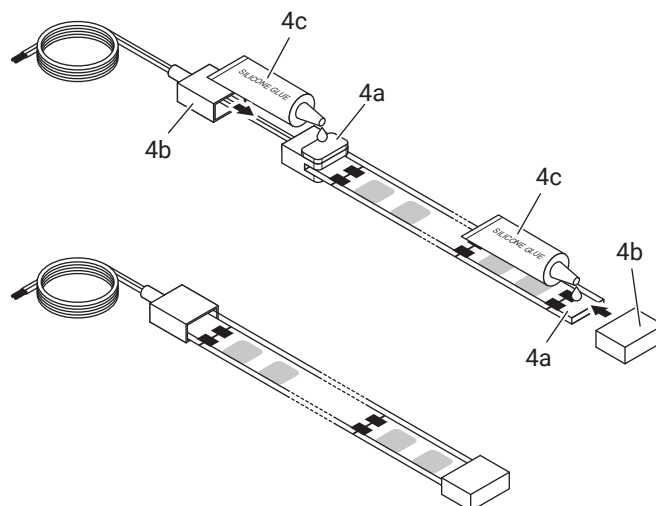
3

Apply the sealant (a) on top of the screw heads and insert the screw cap (b), applying pressure.

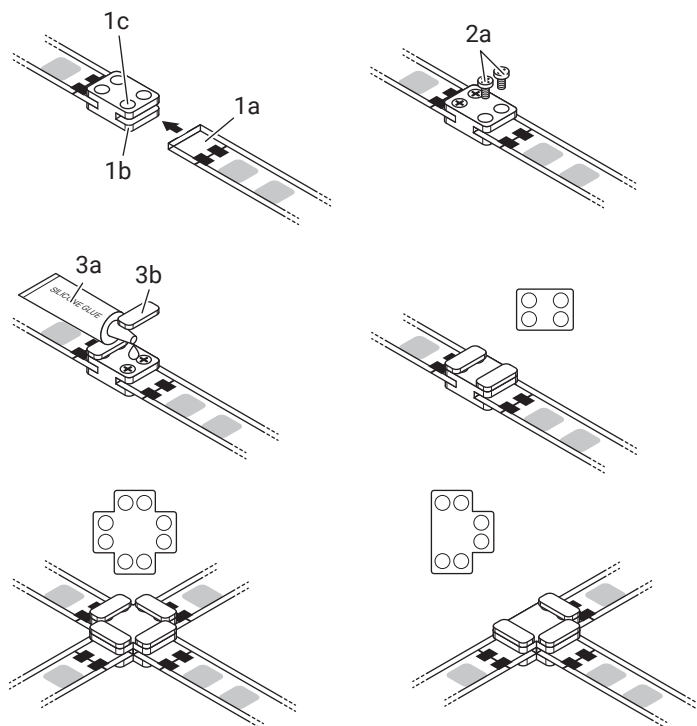


4

The ends of the LED strip (a) must be covered with the silicone end caps (b). Apply the sealant (c) and insert the LED strip in the caps.



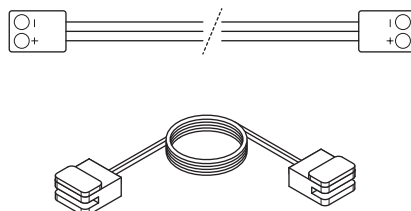
## Connectors installation



**1** Insert the end of the LED strip (a) inside the connector (b). The copper paths must be positioned below the screw holes (c).

**2** Fasten the connector to the LED strip with the screws (a) provided with the protection.

**3** Apply the sealant (a) on top of the screw heads and insert the screw cap (b), applying pressure.



## Upper side tensioner mounting

**1** Pass the strip through the insertion areas until the final position is reached as indicated in the drawings on the right. First into the final position 1 and then 2.

**⚠ ATTENTION**  
Use the area of the strip without LEDs to fasten the strip into the tensioner.

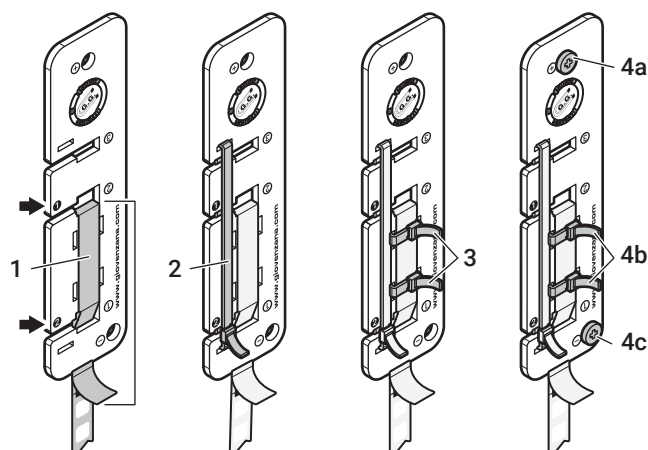
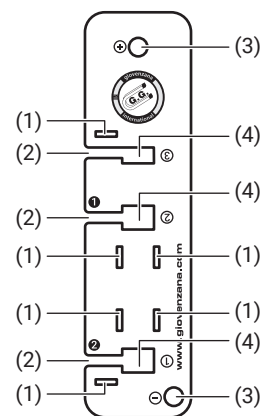
**2** Insert and tighten the locking cable tie. This cable tie will assure the correct position of the strip.

**3** Insert the fixing cable ties fastening the strip against the tensioner. Do not tighten the cable ties yet.

**⚠ ATTENTION**  
Make sure that the length of the remaining strip is enough to tighten the additional areas as needed.

**4** Screw the tensioner on the desired position of the wall using the 6 mm diameter hole (+) (a). Make sure that the LED strip is in the right position and tightly close the fixing cable ties (b). Screw the tensioner on the wall using the 6 mm diameter hole (-) (c).

- (1) Locking cable tie hole
- (2) Strip insertion area
- (3) Hole for screw (Ø 6 mm)
- (4) Strip final position



## Lower side tensioner mounting

- 5** Arrange a rope by connecting it to the hole with a diameter of 6 mm (+) in the lower side tensioner. This cord must be at least the same length as the height of the elevator shaft.

- 6** Below the already mounted upper side tensioner, put the strip through the lower side tensioner as shown in the picture.



### ATTENTION

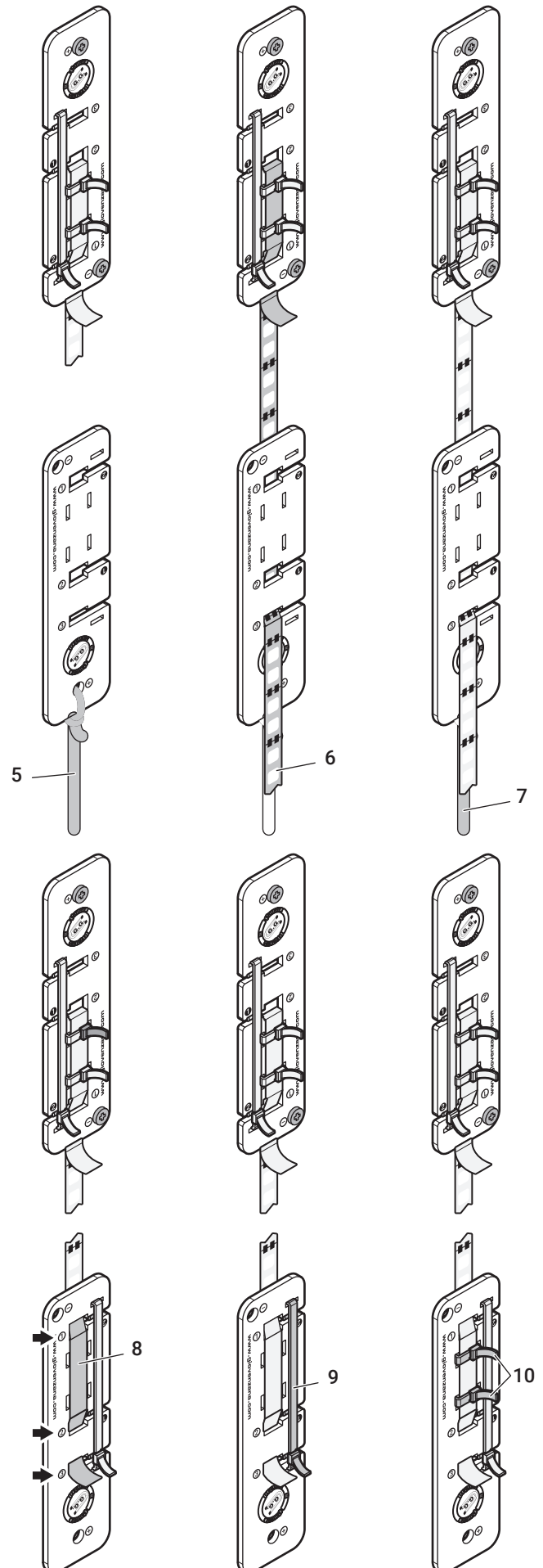
In cases where any additional areas need to be lit, use wall plugs and cable ties to fix the LED strip (distance between wall plugs 0.5 m for horizontal sections and 1.5 m for vertical sections). See section "Wall plugs mounting".

- 7** From the bottom of the shaft, pull the cord down together with the down tensioner in order to place the strip in the correct position. Once the lower side tensioner is in the desired position, remove the cord and proceed to fasten it as follows.

- 8** Pass the strip through the insertion areas until the final position is reached as indicated in the drawings on the right (first 1 then 2 and finally 3).

- 9** Insert and tighten the locking cable tie. This cable tie will ensure the correct position of the strip.

- 10** Insert the fixing cable ties wrapping the strip against the tensioner. Do not tighten the cable ties yet.



- 11** Screw the tensioner on the wall at the desired position using the 6 mm diameter hole (+).



**ATTENTION**

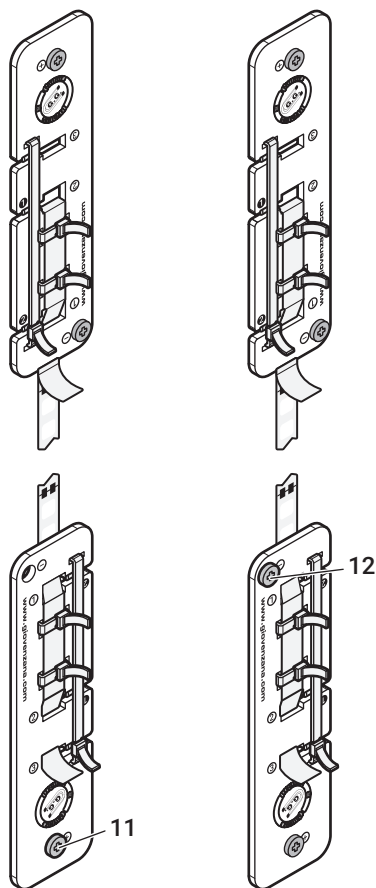
Make sure that the LED strip is in the right position and tightly close the fixing cable ties.

- 12** Screw the tensioner on the wall using the 6 mm diameter hole (-).



**ATTENTION**

Make sure that the cable ties are properly tightened and the length of the remaining strip is enough to lighten the additional areas. In cases where any additional areas need to be lit, use wall plugs and cable ties to fix the strip (distance between wall plugs 0.5 m for horizontal sections and 1.5 m for vertical sections).



## Wall plugs mounting



**ATTENTION**

Make sure that the distance between plugs is 1.5 m for vertical sections and 0.5 m for horizontal sections.



**ATTENTION**

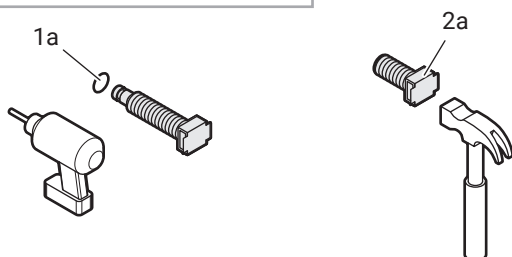
The wall plugs must be fixed over the areas of the strip without LEDs.



**ATTENTION**

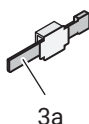
The LED strip must be mounted on a non-combustible surface.

- 1** Drill a Ø 9 mm hole (a) into the wall.

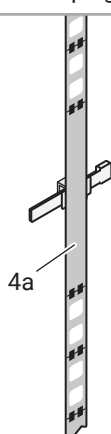


- 2** Force the plug (a) into the hole with the help of a suitable hammer.

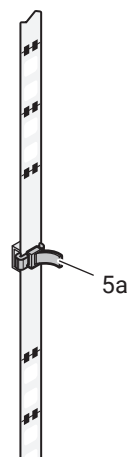
- 3** Place a cable tie (a) in the wall plug head.



- 4** Position the LED strip (a) centering it on the head of the plug.



- 5** Tighten the cable tie (a) to secure the LED strip to the plug.



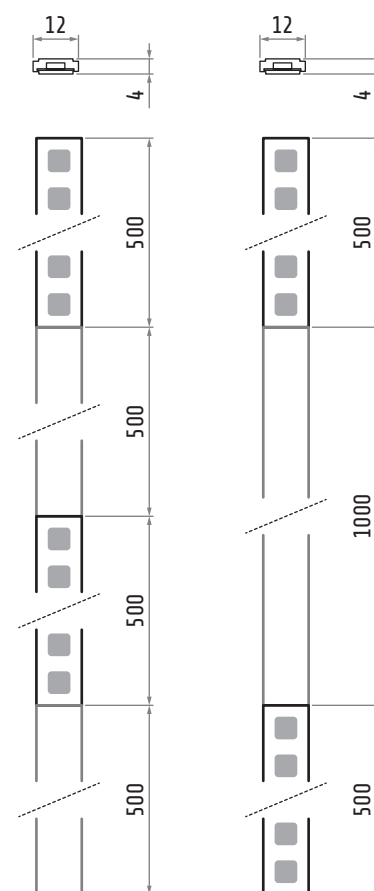


## TECHNICAL CARACTERISTICS

### GSL30 / GSL60

Voltage	230 V ac $\pm 15\%$	
Power	5 W/m	GSL30
	6.4 W/m	GSL60
Flux	450 lm/m	GSL30
	600 lm/m	GSL60
Protection	IP65 *	
Operating temperature	-40 ... +70°C	
Flame retardant class	UL94	V1
UV class	UL94	F1
Dimmable & flickerless with	PF > 0.85	
Beam angle	120°	
Color	pure white 6000-6500K	
Shaft area	EN-81	3.5 m <sup>2</sup>
		9.2 m <sup>2</sup>
Maximum powered length	150 m	
Cutting points distance	1.5 m	
Operating life	5000 hours (max 4 hours per cycle)	

\* With accessories GSLC002, GSLC003 and GSLC004.



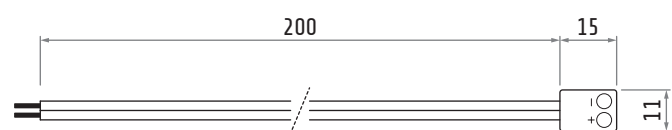
GSL30

GSL60

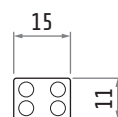
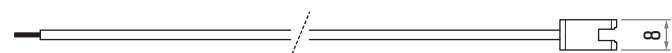
### GSLC001 / GSLC009 / GSLC010 / GSLC011 / GSLC012

Voltage	240 V ac	
Current	max	6 A
Protection	IP65 *	
Operating temperature	-40 ... +70°C	

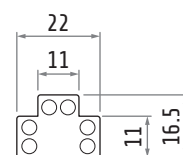
\* With accessories GSLC002 and GSLC004



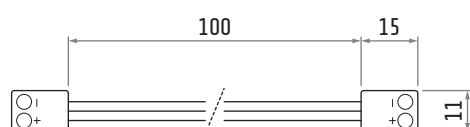
GSLC001



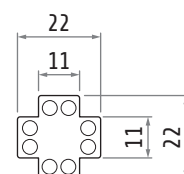
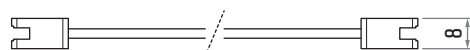
GSLC010



GSLC011



GSLC009



GSLC012



## LAYOUT EXAMPLE

