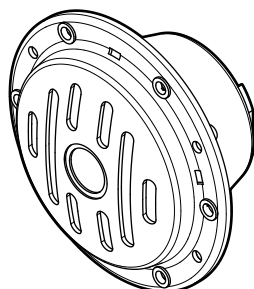


G75...



G100...

# G75... G100...

## WARNING HORNS



### ATTENTION

Before any installation or maintenance operation, disconnect the power supply to the system. Before restoring the power supply, make sure that all connections to the device have been made correctly. Giovenzana International B.V. disclaims any responsibility for any damage to things and people caused by non-compliance with the rules described here.



Before use, read this booklet carefully to acquaint yourself with the features of the product. This booklet is an integral part of the product and therefore must be kept until the product is dismissed.



Giovenzana International B.V. reserves the right to change the features and data shown in this document at any time and without notice. This document cannot therefore be considered a contract with third parties.



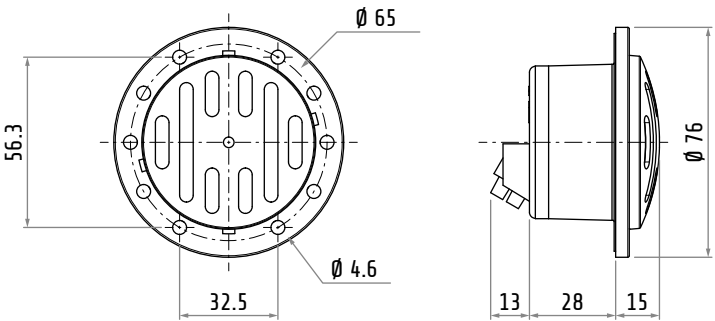
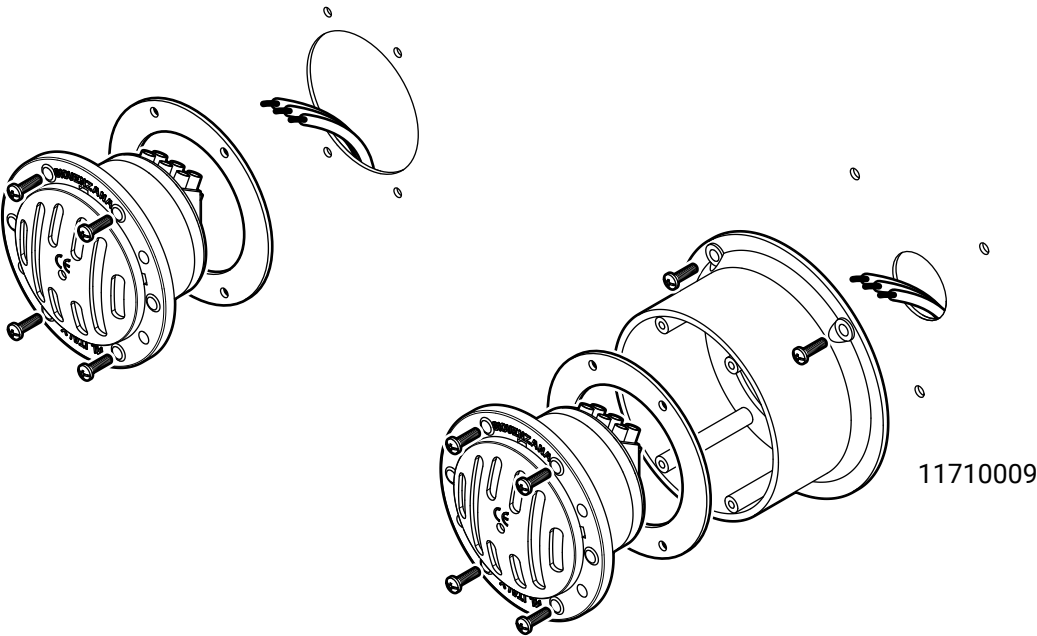
Any improper installation or any tampering of the device may cause serious personnel injury or property damage, therefore, the installation and maintenance must be performed by specialized and authorized personnel.



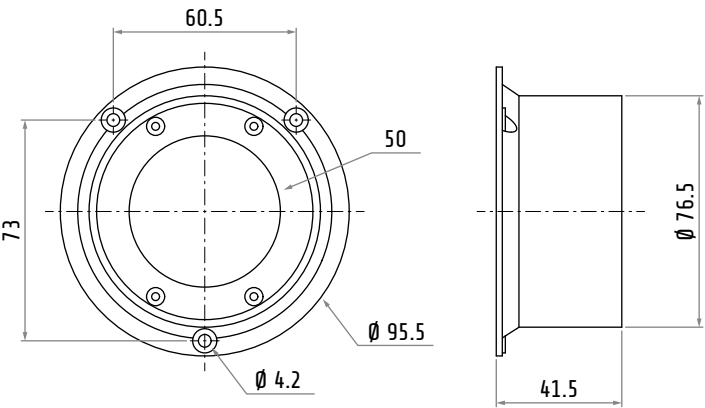
The use of this device is not allowed in environment with a potentially explosive atmosphere or in presence of corrosive substances and in salt spray.

	Supply	Consumption	Frequency	Connectors	IP rating	Sound pressure level
G75.24	24 V AC	190 mA	50 Hz	3	IP30	88 dB (A)
G75.48	48 V AC	80 mA	50 Hz	3	IP30	88 dB (A)
G75.110	110 V AC	28 mA	50 Hz	3	IP30	88 dB (A)
G75.230	230 V AC	20 mA	50 Hz	3	IP30	88 dB (A)
G75.24DC	24 V DC	40 mA	50 Hz	2	IP30	88 dB (A)
G75.48DC	48 V DC	-	50 Hz	2	IP30	88 dB (A)
G100.48	48 V AC	415 mA	300÷350 Hz	2	IP65	93.5 dB (A)
G100.24	24 V AC	210 mA	300÷350 Hz	2	IP65	93.5 dB (A)
G100.230	230 V AC	90 mA	300÷350 Hz	2	IP65	93.5 dB (A)
G100.110	110 V AC	42 mA	300÷350 Hz	2	IP65	93.5 dB (A)

G75...



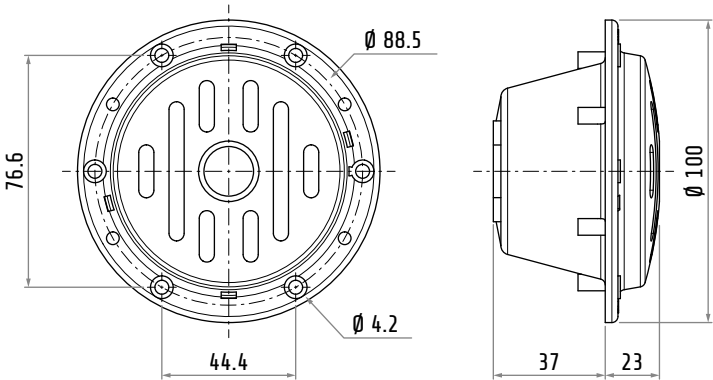
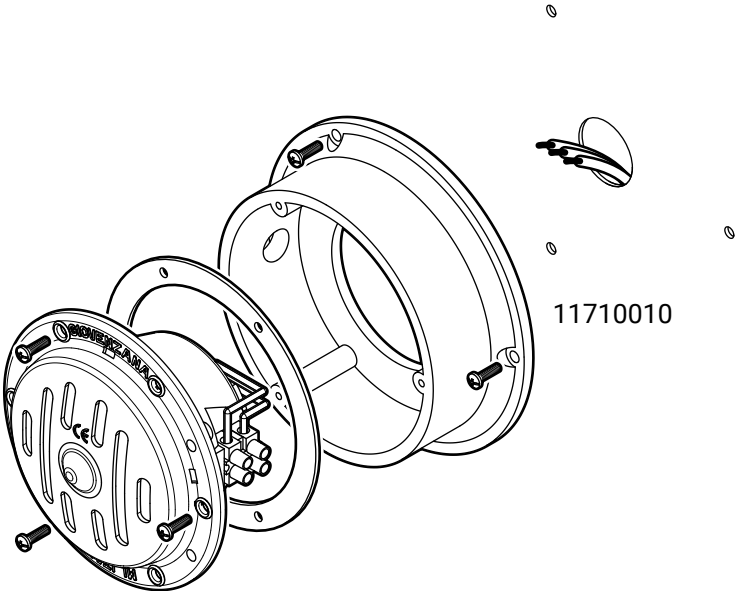
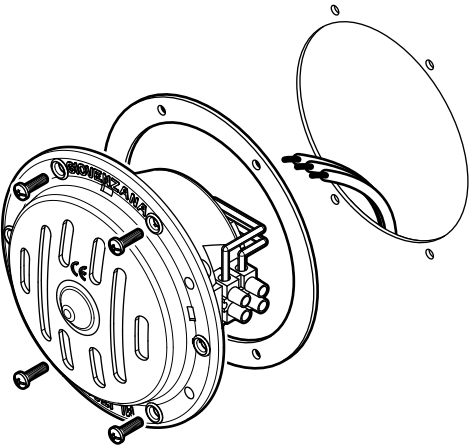
G75...



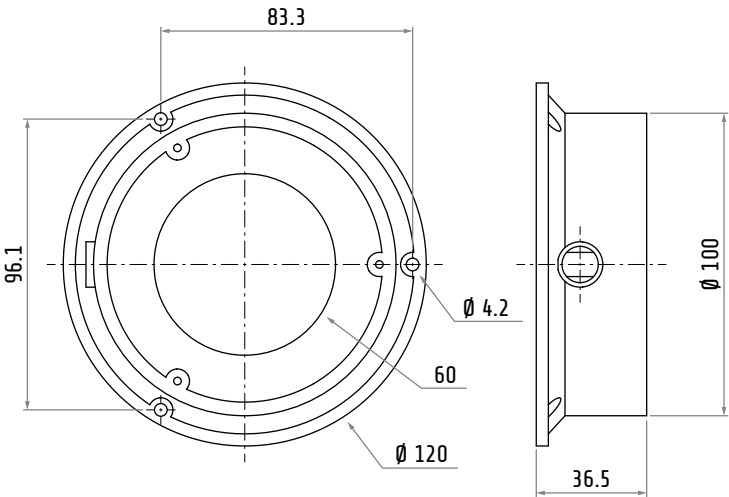
11710009

Dimensions in mm  
Illustrations NOT in scale

G100...



G100...



11710010

Dimensions in mm  
Illustrations NOT in scale