

SPECIFICATIONS	2
General technical data	2
Cam switch technical data	2
Certifications	2
Main components	3
Overall dimensions	4
WIRING	5
INSTALLATION	7
Installation dimensions	7
Operation	8
Cam switch operation	8

FCP245

POSITION LIMIT SWITCH



Before use, read this booklet carefully to acquaint yourself with the features of the product. This booklet is an integral part of the product and therefore must be kept until the product is dismissed.



Giovenzana International B.V. reserves the right to change the features and data shown in this document at any time and without notice. This document cannot therefore be considered a contract with third parties.



Position limit switches FCP are designed and manufactured according to IEC international standard and EN European regulations.



Any improper installation or any tampering of the device may cause serious personnel injury or property damage, therefore, the installation and maintenance must be performed by specialized and authorized personnel.



The use of this device is not allowed in environment with a potentially explosive atmosphere or in presence of corrosive substances and in salt spray.



The FCP limit switches rotary gear position are used to control several handling systems:

- **Hoists:** the limit switch is used to stop the hoist whenever it reaches a limit position.



They are suitable for use in industrial environment with machinery monitoring and protection purpose.

SPECIFICATIONS

General technical data

Standards	IEC/EN 60497-3, EN 81-1
Case	self extinguishing V0 UL94
Protection class IEC/EN 60529	IP65 double insulation
Cable entry	2 × M20
Operating temperature	-25 ... +55°C
Storage temperature	-30 ... +70°C
Notes	- two pole on-off switch - reinforced mechanical stop - other configurations on request

Cam switch technical data

Product ID	CX40 Giovenzana line		
Rated enclosed thermal current	I _{the}		40 A
Rated insulation voltage	U _i		690 V
Connections	terminals gauge	EN60947-1	A5
	terminals screw		M4
	tightening torque	EN60947-1 UL508	1.2 N×m / 10.6 lb×in 12 lb×in / 1.4 N×m
Connectable section	flexible cable		2 × 2.5 ... 10 mm ² AWG 14 ... 6
	rigid cable		2 × 2.5 ... 10 mm ² AWG 14 ... 6
Contacts	double breaking		

Certifications

Position limit switches FCP series are in conformity with the following standards or other normative documents:

EN 60947-1	2007/A1 : 2011/A2 : 2014
EN 60947-3	2009/A1 : 2012/A2 : 2015
EN 60204-1	2006/A1 : 2009
EN 60529	1991/A1 : 2000/A2 : 2013
EN 50581	2012
IEC 63000	2016

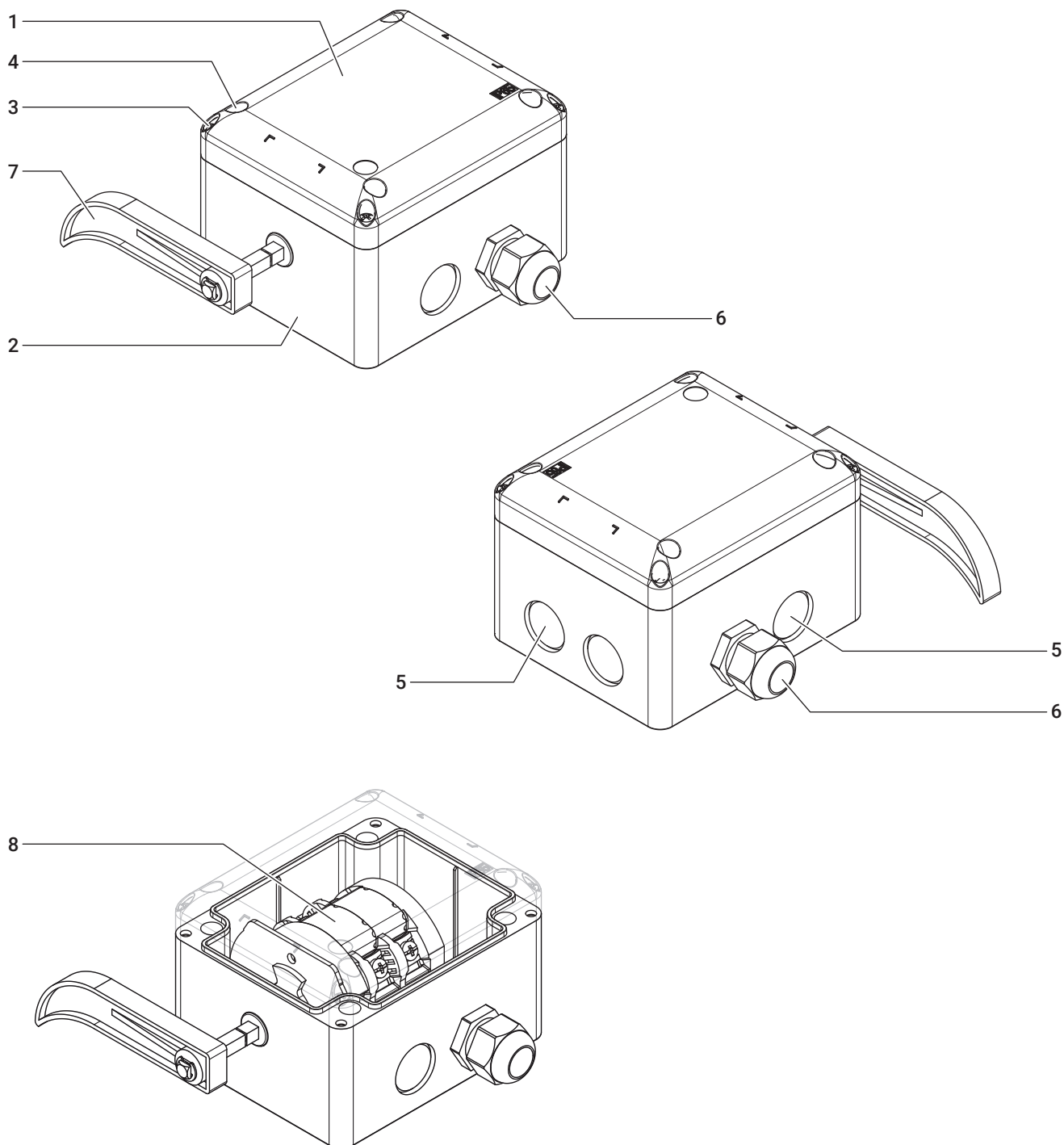
and therefore follow the provision of the Directives:

2014/35/UE
2011/65/UE
2015/863/UE

Markings



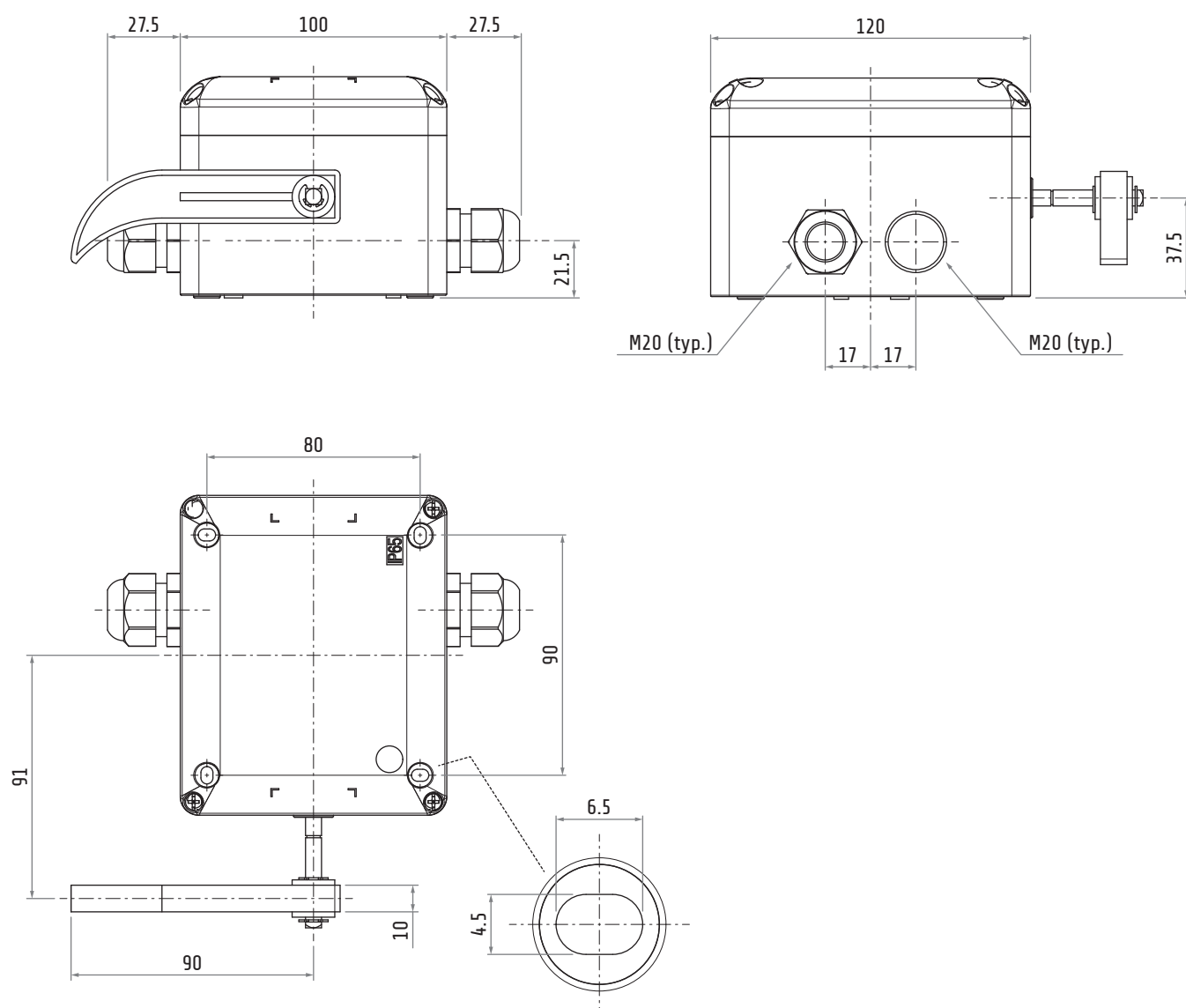
Main components



1	Cover
2	Base
3	Cover fixing screws M4×30
4	Holes for installation screws

5	M20 knockout
6	M20 cable gland
7	Lever
8	Cam switch

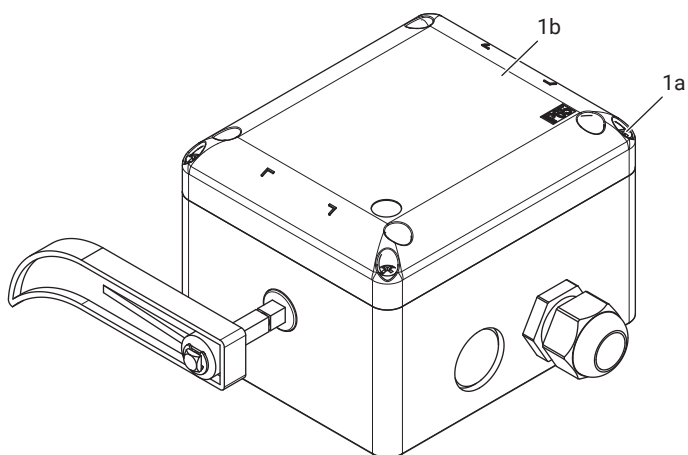
Overall dimensions



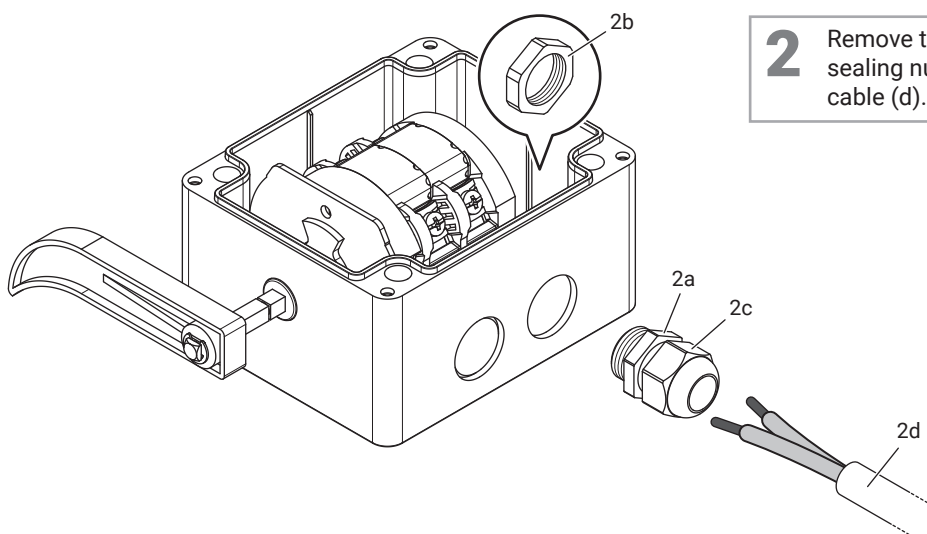
Dimensions in mm / illustrations NOT in scale

WIRING

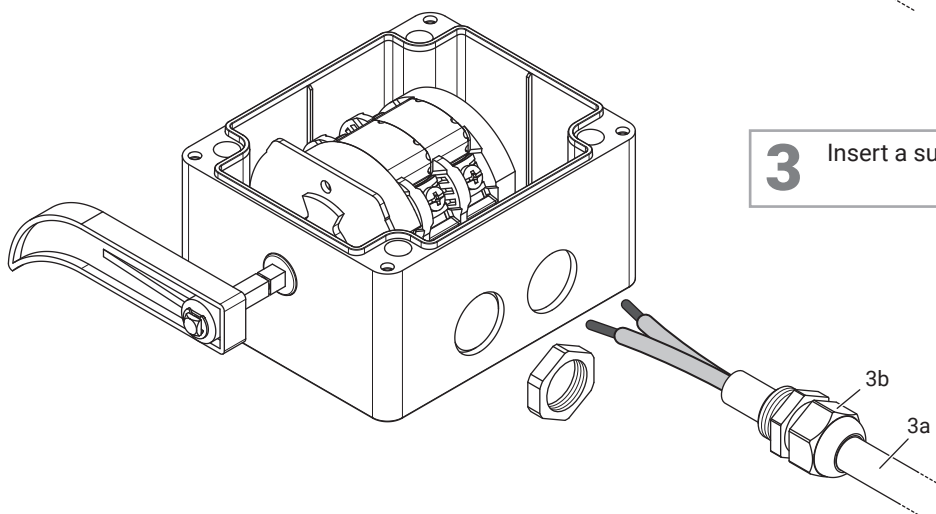
- 1 Unscrew the 4 screws (a) and remove the cover (b).



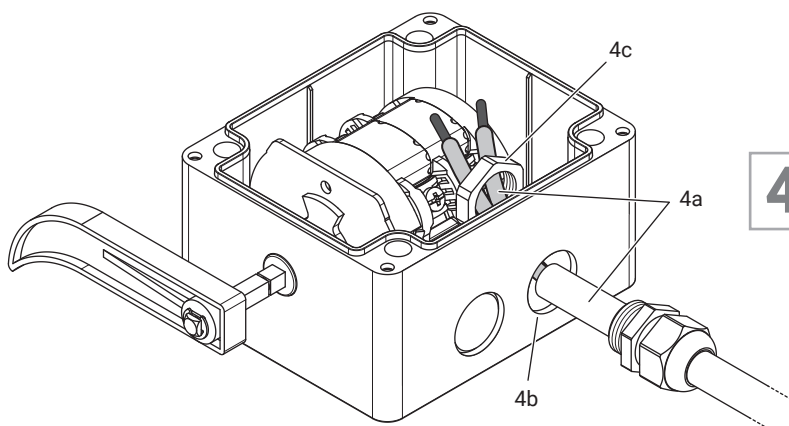
- 2 Remove the cable gland (a-b-c) and loosen the sealing nut (c) to facilitate the insertion of the cable (d).

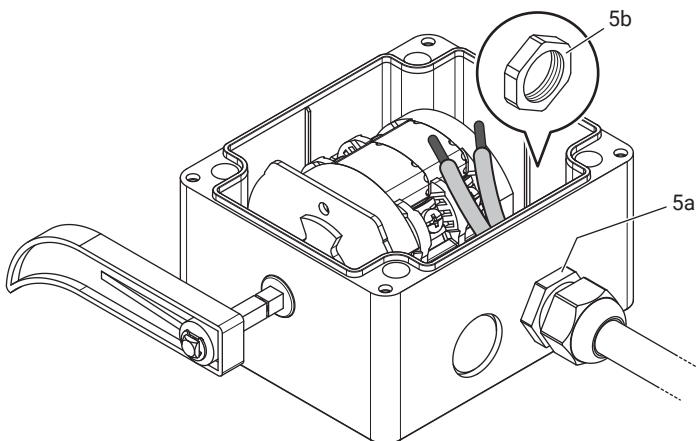


- 3 Insert a suitable cable (a) into the cable gland (b).

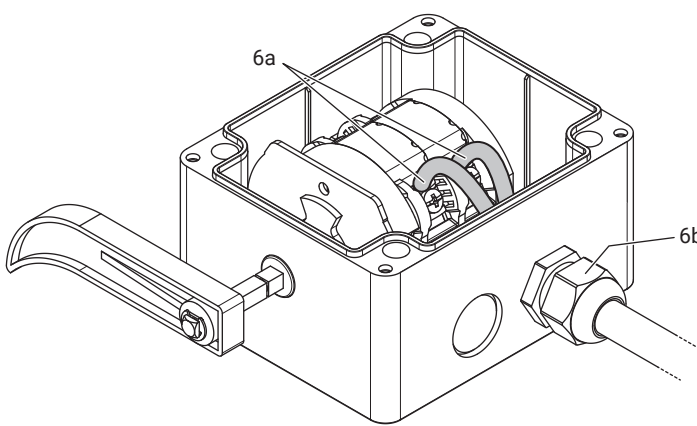


- 4 Insert the cable (a) in the limit switch base (b) passing it also through the lock nut (c).





- 5** Fix the cable gland (a) and then tighten the lock nut (b).

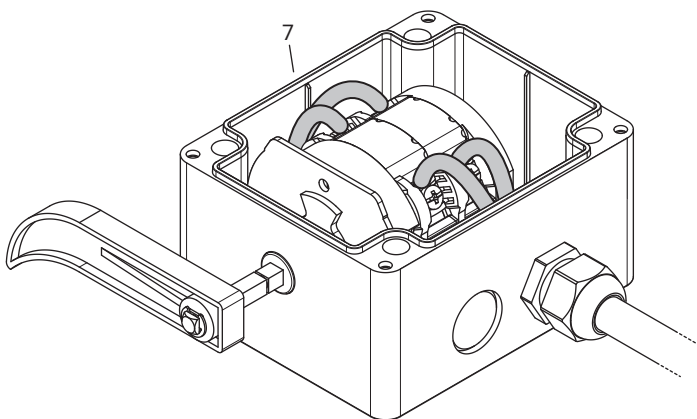


- 6** Wire (a) the cam switch according to the diagram in paragraph "Cam switch operation" p.8. After wiring, tighten the sealing nut (b).



TIGHTENING TORQUE (5a)

1.2 Nxm / 10.6 lbin (EN60947-1)
12 lbin / 1.4 Nxm (UL508)

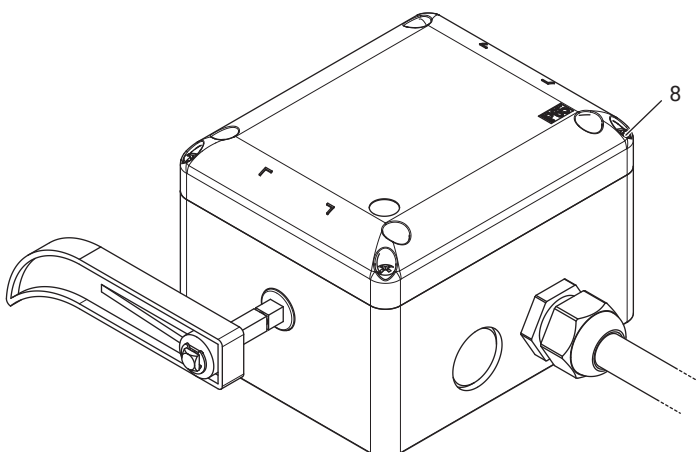


- 7** Repeat the wiring operations also for the cable gland on the opposite side.



ATTENTION

Carry out the wiring so that the cables do not get in the way when closing the cover.



- 8** Close the cover and fix it with the 4 screws.

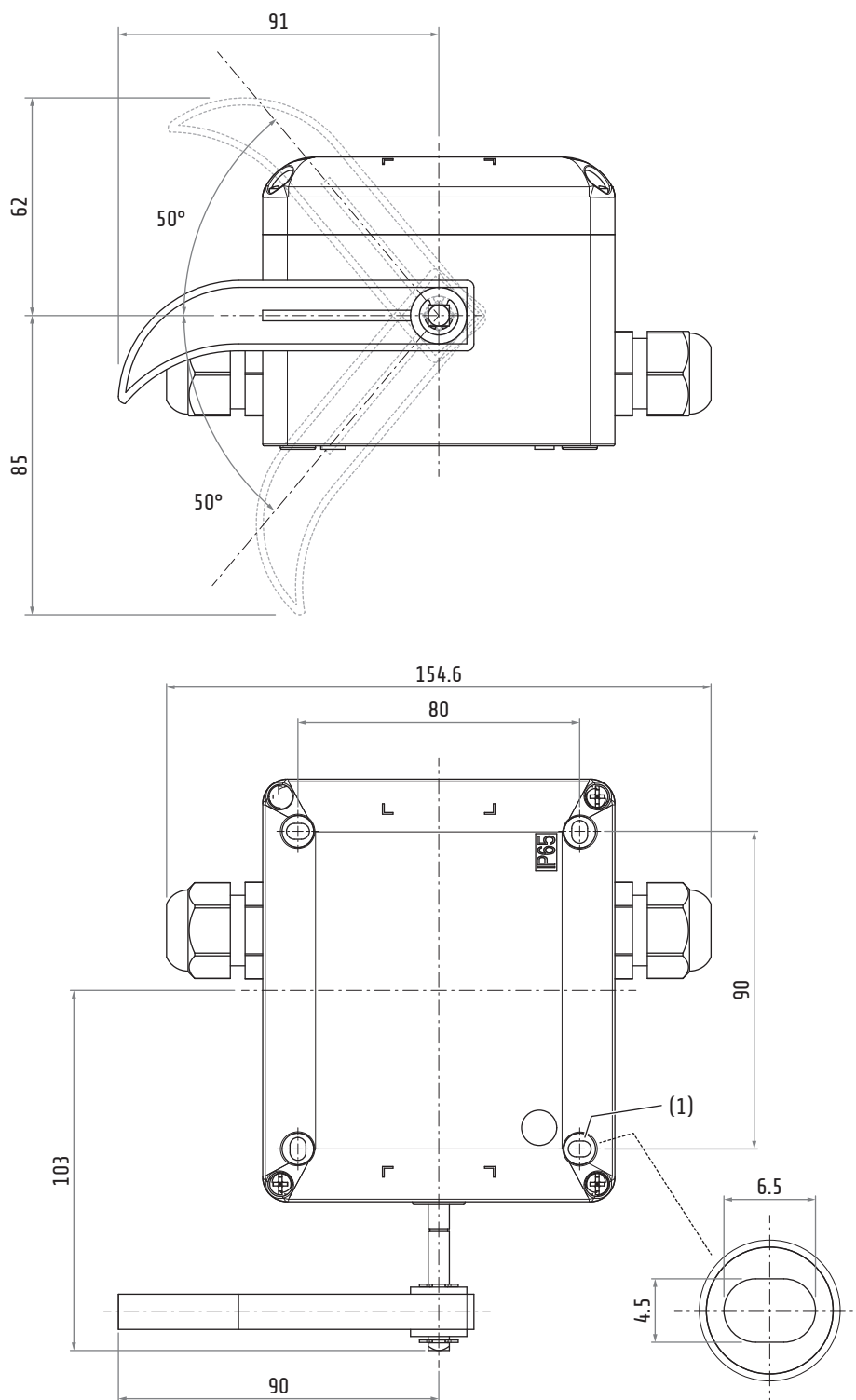


TIGHTENING TORQUE

1.2 - 1.4 Nxm
10.6 - 12.4 lbin

INSTALLATION

Installation dimensions

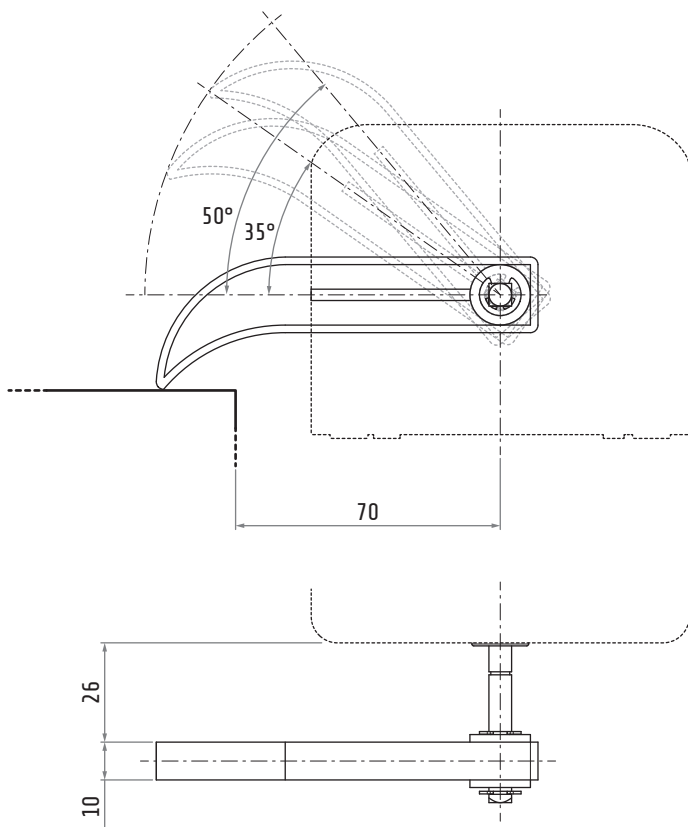


TIGHTENING TORQUE

1.2 - 1.4 Nxm / 10.6 - 12.4 lbxin

- 1 Fix the limit switch with 4 suitable screws (not supplied) into the service position considering the drilling pattern and the overall dimensions shown in the picture.

Dimensions in mm / illustrations NOT in scale



- | | |
|-----|--------------------------|
| 35° | Operation angle |
| 50° | Maximum allowed angle |
| 70 | Allowed minimum distance |
| 26 | Maximum distance |

Dimensions in mm / illustrations NOT in scale



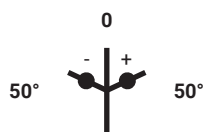
ATTENTION

A not allowed distances can compromise the operation of the limit switch and therefore cause serious damages to things and people during use.

Cam switch operation

FCP245

- Single speed
- 3 positions with spring return
- With mechanical interlock ●



2							
	3-4			X			
1							
	1-2			X			
		1		0		2	