



The product is installed in these energy transmission lines:

TR85H7P continuous

Please find the relevant reference guides on our instruction manuals page:

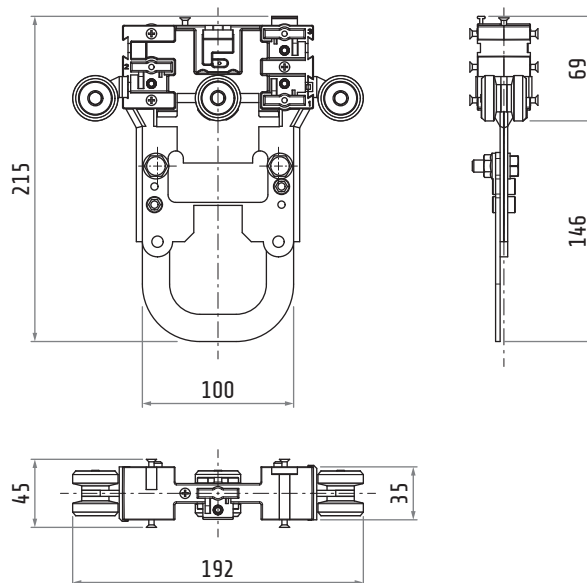
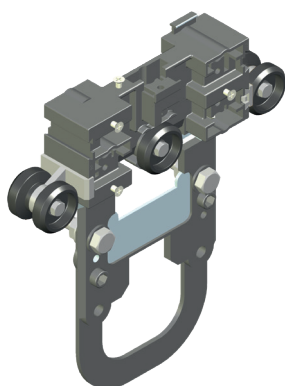
<https://www.giovenzana.com/leaflets/>

INSTRUCTION
MANUALS



TR85H7P14

CONDUCTOR INSERTION TROLLEY



Material	body	nylon and galvanized steel
	hardware	galvanized steel
Weight	~400 g	