



The product is installed in these energy transmission lines:

TR85H7P	continuous
TR85H7P	pre-mounted

Please find the relevant reference guides on our instruction manuals page:

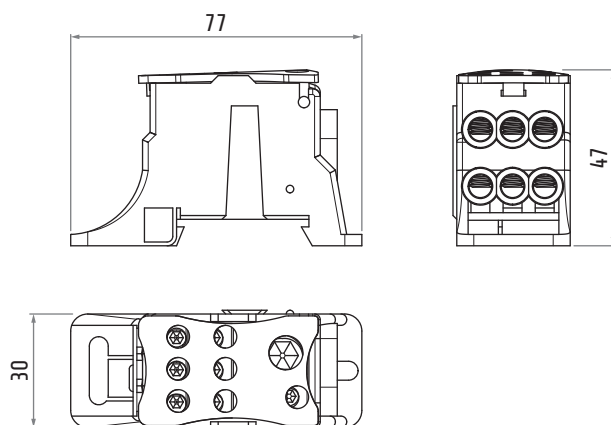
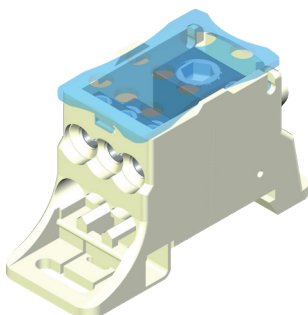
<https://www.giovenzana.com/leaflets/>

INSTRUCTION
MANUALS



TR8562

DOUBLE / TRIPLE TROLLEY CONNECTION CLAMP



Material	plastic
Weight	~150 g