



The product is installed in these energy transmission lines:

TR85H7P	continuous
TR85H7P	pre-mounted

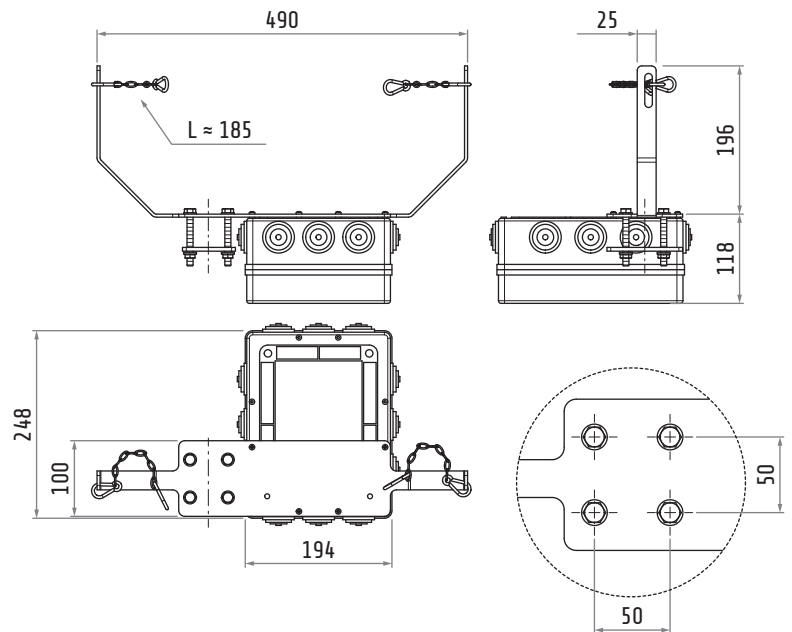
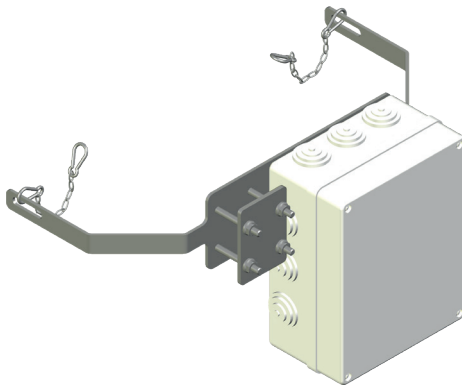


Please find the relevant reference guides on our instruction manuals page:

<https://www.giovenzana.com/leaflets/>

TR8558

DOUBLE TOWING ARM WITH CHAIN



Material	body	plastic
	arm	galvanized steel
	hardware	galvanized steel
Weight	~2.4 kg	

Dimensions in mm / illustrations NOT in scale