



The product is installed in these energy transmission lines:

TR85H5P	continuous
TR85H5P	pre-mounted

Please find the relevant reference guides on our instruction manuals page:

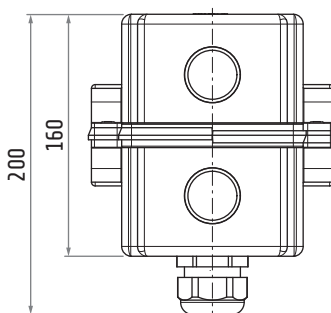
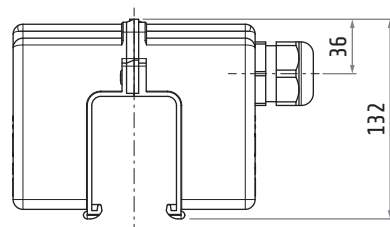
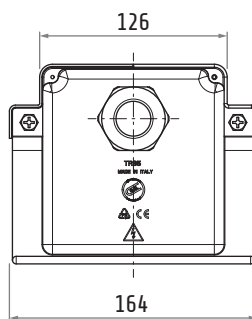
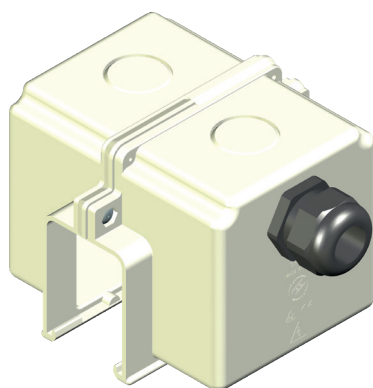
<https://www.giovenzana.com/leaflets/>

INSTRUCTION
MANUALS



TR8547W

IN-LINE FEED



Material	body	nylon
Weight		~170 g

Dimensions in mm / illustrations NOT in scale