



The product is installed in these energy transmission lines:

TR60	continuous
TR60	pre-mounted
TR85H5P	continuous
TR85H5P	pre-mounted

INSTRUCTION
MANUALS

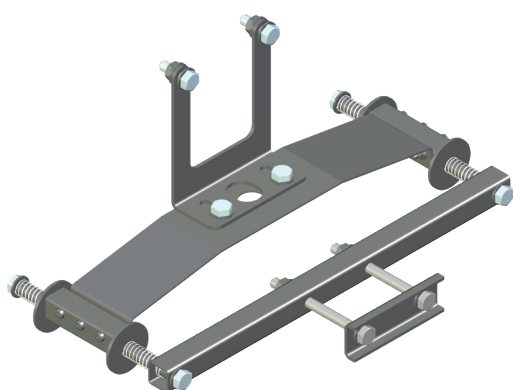


TR8538

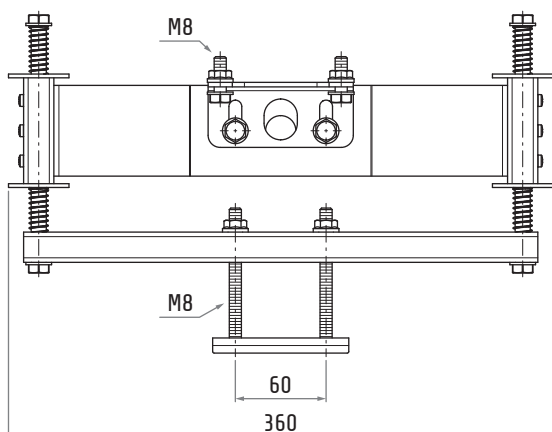
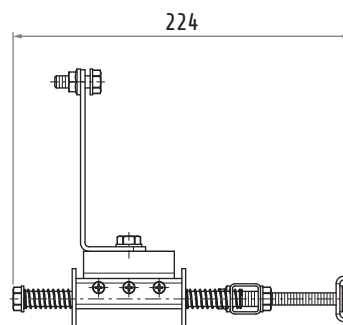
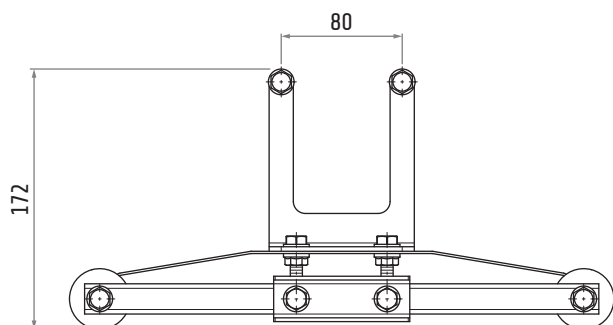
Please find the relevant reference guides on our instruction manuals page:

<https://www.giovenzana.com/leaflets/>

SPRING LOADED TOWING ARM



Material	body	galvanized steel
	hardware	galvanized steel
Weight		~1.27 kg



Dimensions in mm / illustrations NOT in scale