



The product is installed in these energy transmission lines:

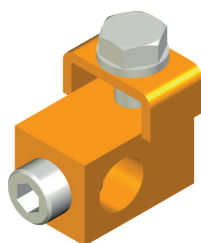
TR85H5P	continuous
TR85H5P	pre-mounted
TR85H7P	continuous
TR85H7P	pre-mounted

INSTRUCTION
MANUALS



Please find the relevant reference guides on our instruction manuals page:

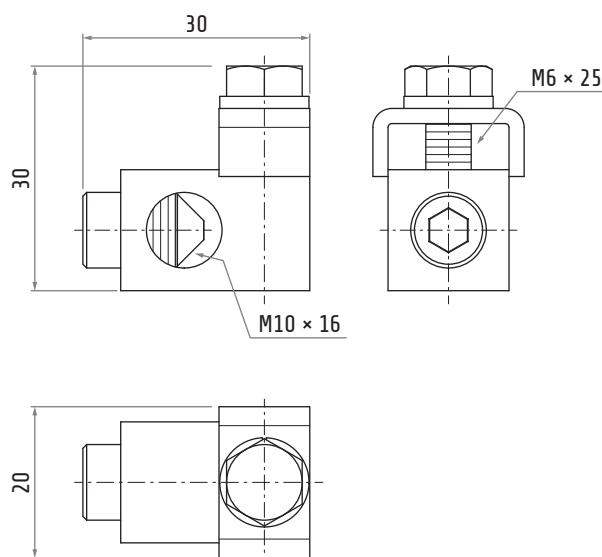
<https://www.giovenzana.com/leaflets/>



Material	body	brass
	hardware	galvanized steel
Weight		~60 g

TR8537

CONDUCTORS CONNECTION CLAMP FOR INLINE FEEDING BOX



Dimensions in mm / illustrations NOT in scale