



The product is installed in these energy transmission lines:

TR85H5P continuous

Please find the relevant reference guides on our instruction manuals page:

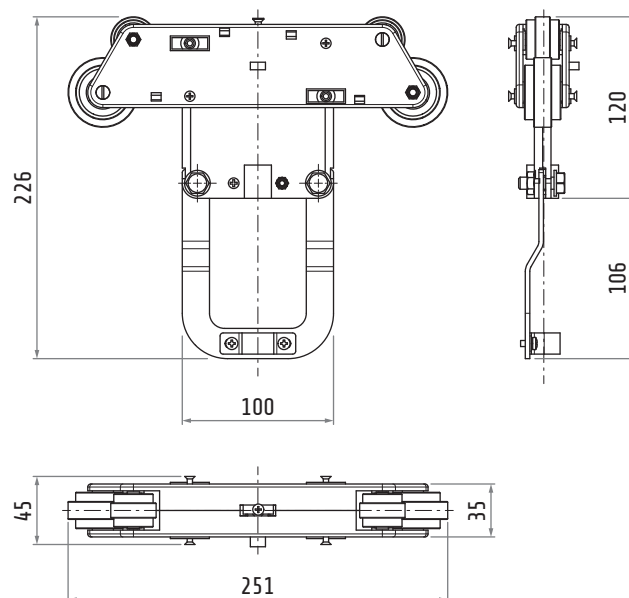
<https://www.giovenzana.com/leaflets/>

INSTRUCTION
MANUALS



TR8514

CONDUCTOR INSERTION TROLLEY



Material	body	nylon and galvanized steel
	hardware	galvanized steel
Weight	~350 g	