



The product is installed in these energy transmission lines:

TR60	continuous
TR60	pre-mounted

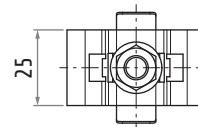
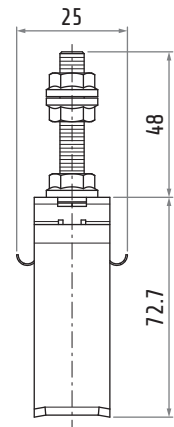
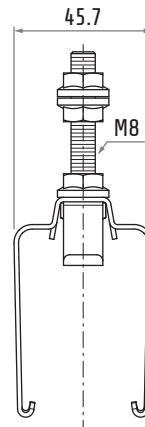
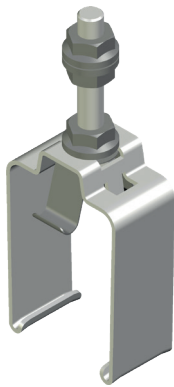


Please find the relevant reference guides on our instruction manuals page:

<https://www.giovenzana.com/leaflets/>

TR6020

METALLIC HANGER CLAMP



Material	body	galvanized steel
	hardware	galvanized steel
Weight		~100 g

Dimensions in mm / illustrations NOT in scale