



The product is installed in these energy transmission lines:

TR60	continuous
TR60	pre-mounted

Please find the relevant reference guides on our instruction manuals page:

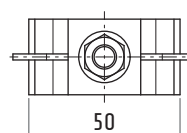
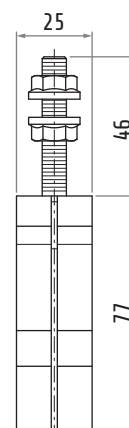
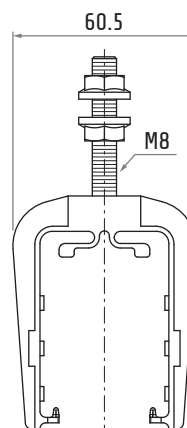
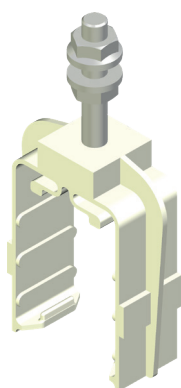
<https://www.giovenzana.com/leaflets/>

INSTRUCTION  
MANUALS



# TR6002W

## PLASTIC HANGER CLAMP



Material	body	nylon
	hardware	galvanized steel
Weight		~70 g