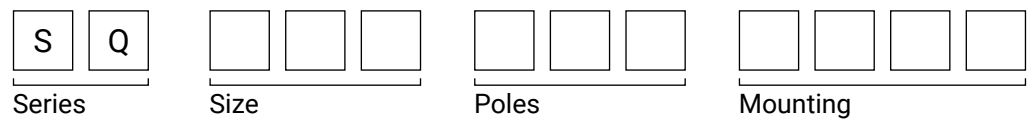










SQ040... SQ063...

REGOLUS SWITCH DISCONNECTORS (63 A / 80 A)

Code reading



Type R panel mounting		2 poles	3 poles
		SQ040002R	SQ040003R
		SQ063002R	SQ063003R
Type R panel mounting		6 poles	3+3 poles (changeover)
		SQ040006R	SQ040033R
		SQ063006R	SQ063033R
Type B base mounting		2 poles	3 poles
		SQ040002B	SQ040003B
		SQ063002B	SQ063003B
Type B base mounting		6 poles	3+3 poles (changeover)
		SQ040006B	SQ040033B
		SQ063006B	SQ063033B
Type X panel mounting		2 poles	3 poles
		SQ040002X	SQ040003X
		SQ063002X	SQ063003X
Type D - L2N base mounting with direct command		2 poles	3 poles
		SQ040002DL2N	SQ040003DL2N
		SQ063002DL2N	SQ063003DL2N

SPECIFICATIONS

General characteristics

Protection class	terminals		IP 20
Material group		EN 60947-1	II
Pollution grade		EN 60947-1	3
Flammability	live electrical parts	UL94	V0
Ambient temperature	operating storage		-25 ... +55°C -30 ... +70°C
Climate withstand		IEC 68 part 2-3 IEC 68 part 2-30	damp heat, steady state damp heat, cyclic
Connections	terminal block caliber	EN60947-1	A8
	terminal screw		M5
	tightening torque	EN60947-1 UL508	3 N·m 32 lb·in (3.6 N·m)
Connectable section	flexible conductors		1.5 ... 25 mm ² AWG 10 ... 2
	solid conductors		1.5 ... 25 mm ² AWG 10 ... 2
Contacts			slow action double breaking
Opening angles			90°
Mechanical lifetime	@ 120 operations / hour		0.1 million cycles
Maximum altitude derating	up to 2000 m over 2000 m	voltage (V) power (A)	standard < 1% each 100 m < 1% each 1000 m

EN 60947-3 characteristics

		SQ040	SQ063
Rated operating voltage	U _e	690 V	690 V
Rated insulation voltage	U _i	690 V	690 V
Rated impulse withstand voltage (sectionable)	U _{imp}	8 kV	8 kV
Rated thermal current	I _{th}	63 A	80 A
Rated enclosed thermal current	I _{the}	63 A	80 A
Frequency		50/60 Hz	50/60 Hz

Alternate current

Rated operating current		I_e	SQ040	SQ063	
AC-21A	Switching of resistive loads, including moderate overloads	690 V	63 A	80 A	
AC-22A	Switching of mixed resistive and inductive loads, including moderate overloads	500 V	63 A	80 A	
		690 V	63 A	80 A	
AC-23A	Switching of motor loads or other highly inductive loads	3 phases - 3 poles	230 V	63 A	80 A
			400 V	50 A	75 A
			500 V	50 A	75 A
			690 V	26 A	32 A
AC-3	Squirrel-cage motors: starting, switches off motors during running time	3 phases - 3 poles	230 V	45 A	60 A
			400 V	40 A	60 A
			500 V	35 A	45 A
			690 V	22 A	25 A
AC-23A	Nominal breaking capacity ($\cos\varphi$ 0.45)	230 V	360 A	600 A	
		400 V	360 A	536 A	
		500 V	280 A	536 A	
		690 V	176 A	256 A	

Short circuit characteristics

		SQ040	SQ063
Rated short-time short circuit withstand current (1 s)	I_{cw}	1200 A	1500 A
Rated short circuit making capacity	I_{cm}	2200 A	2800 A
Conditional rated short circuit withstand current		10 kA	10 kA
Fuse rating (type gG)	500 V	80 A	80 A
	690 V	80 A	80 A

UL 508 characteristics

		SQ040	SQ063	
General use	600 V AC	60 A	80 A	
Standard motor load	1 phase - 2 poles	120 V AC	2 HP 24 FLA	3 HP 34 FLA
		200 - 208 V AC	3 HP	5 HP
		240 V AC	5 HP 28 FLA	7.5 HP 40 FLA
	3 phases - 3 poles	200 - 208 V AC	7.5 HP	10 HP
		240 V AC	10 HP 28 FLA	15 HP 42 FLA
		480 V AC	25 HP 34 FLA	30 HP 40 FLA
	600 V AC	30 HP 32 FLA	40 HP 41 FLA	

OVERALL DIMENSIONS

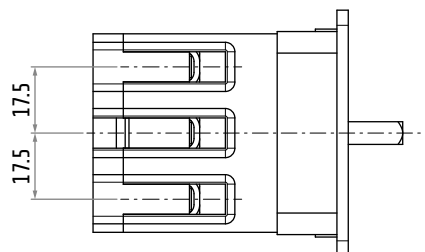
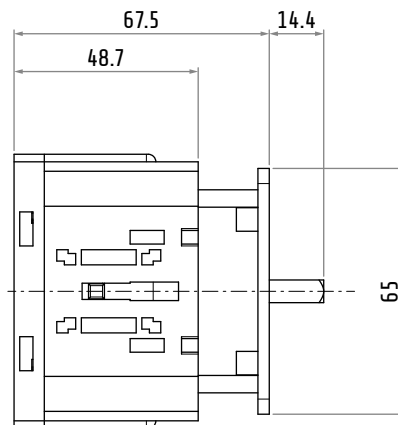
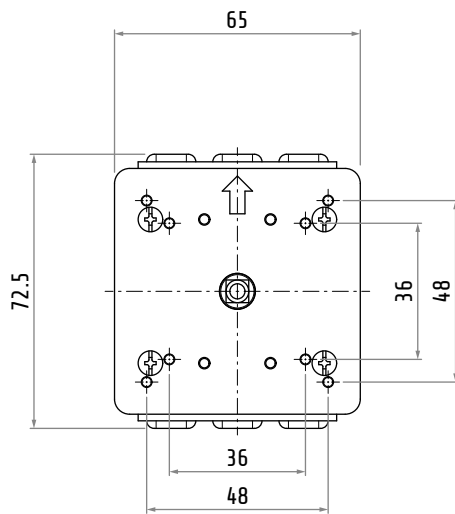
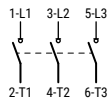
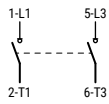
Type R

- rear panel mounting
- screw fixing

- 2 or 3 poles



Series	2 poles	3 poles	AC-21A 690 V	AC-23A 400 V
SQ040	SQ040002R	SQ040003R	63 A	50 A
SQ063	SQ063002R	SQ063003R	80 A	75 A



Marking: CE, UL, UKCA

Dimensions in mm / illustrations NOT in scale

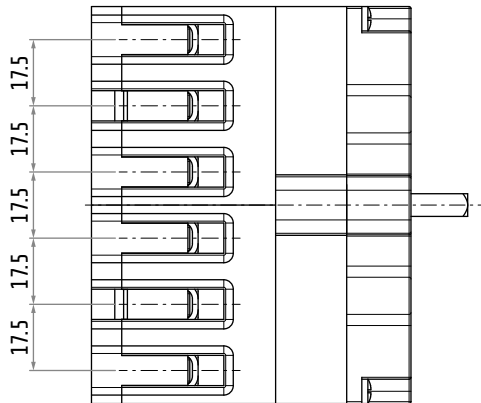
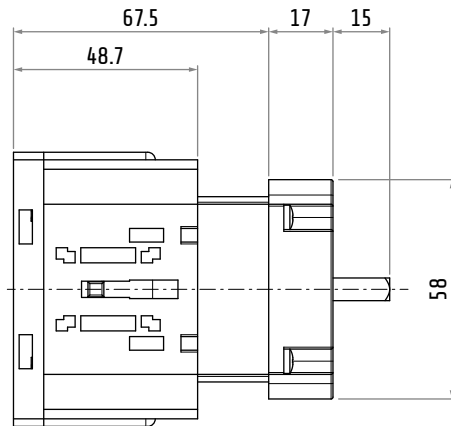
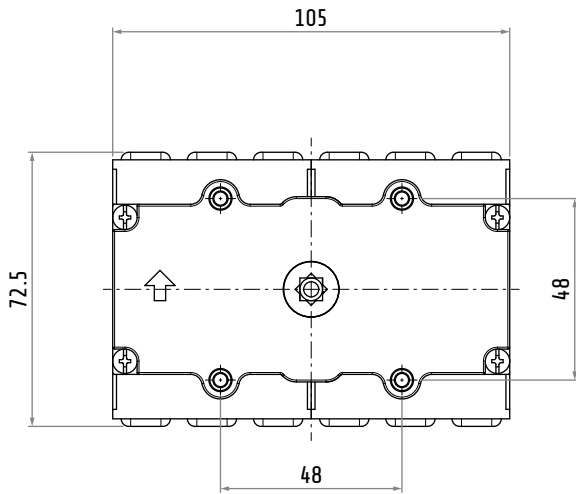
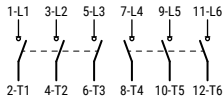
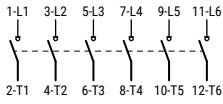
Type R

- rear panel mounting
- screw fixing

- 6 poles or 3 + 3 poles (changeover)



Series	6 poles	3 + 3 poles (changeover)	AC-21A 690 V	AC-23A 400 V
SQ040	SQ040006R	SQ040033R	63 A	50 A
SQ063	SQ063006R	SQ063033R	80 A	75 A



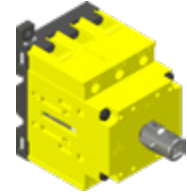
Marking: CE, UL, UKCA

Dimensions in mm / illustrations NOT in scale

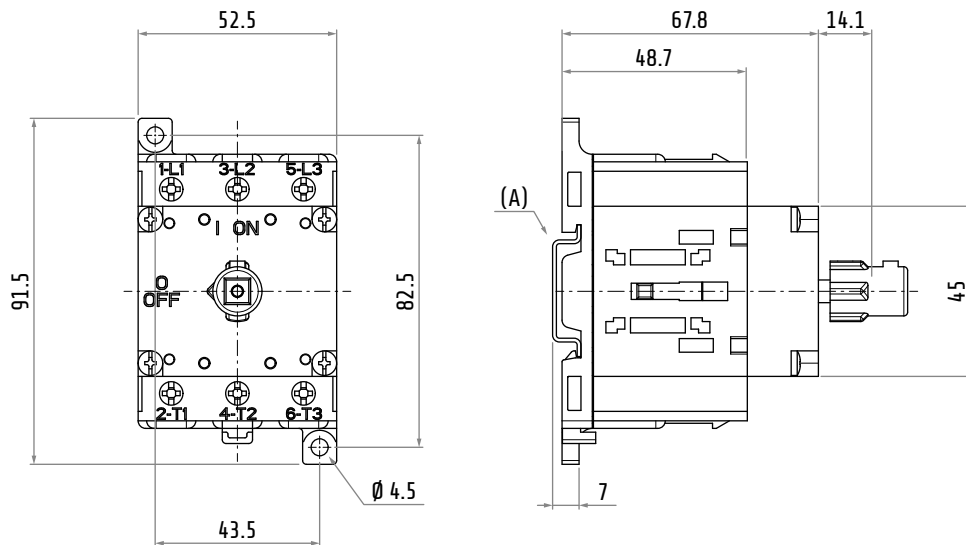
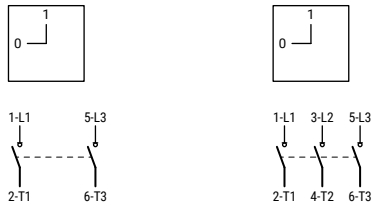
Type B

- base mounting
- DIN rail 35 mm mounting (EN 50022-35)

- suitable for door locking actuators
- 2 or 3 poles

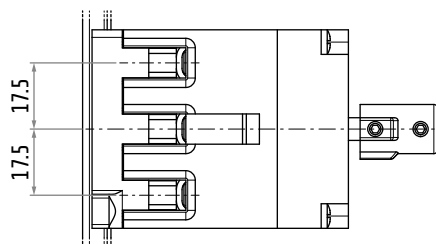


Series	2 poles	3 poles	AC-21A 690 V	AC-23A 400 V
SQ040	SQ040002B	SQ040003B	63 A	50 A
SQ063	SQ063002B	SQ063003B	80 A	75 A



(A) DIN rail 35 mm (EN 50022-35)

This configuration allows both base mounting and DIN mounting.

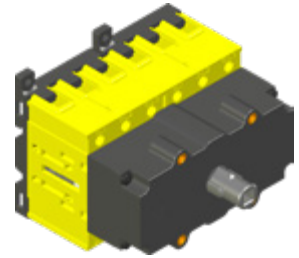


Marking: CE, UL, UKCA

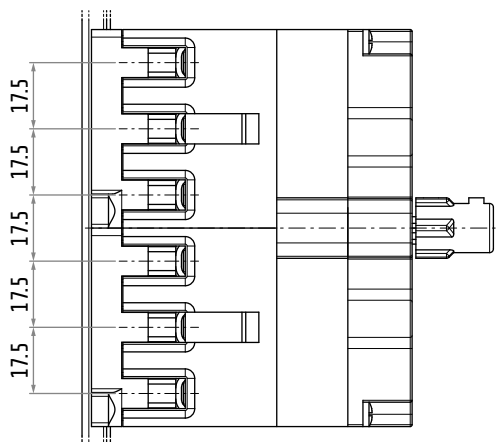
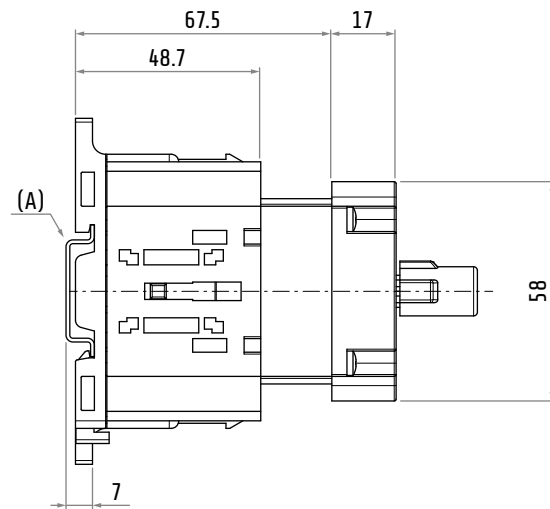
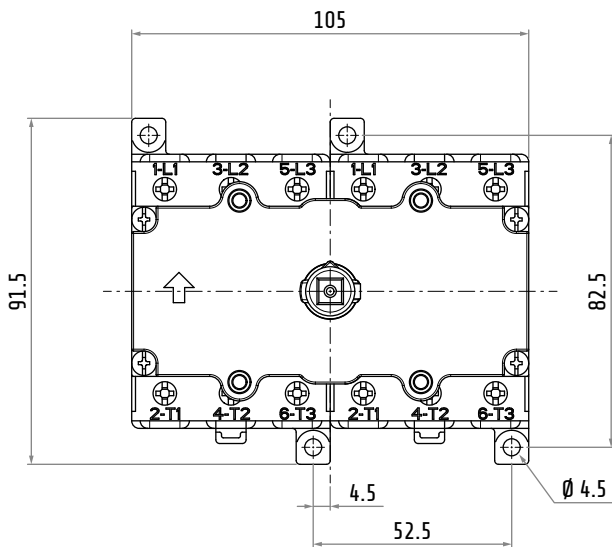
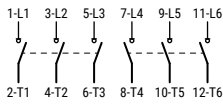
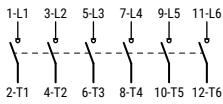
Type B

- base mounting
- DIN rail 35 mm mounting (EN 50022-35)

- suitable for door locking actuators
- 6 poles or 3 + 3 poles (changeover)



Series	6 poles	3 + 3 poles (changeover)	AC-21A 690 V	AC-23A 400 V
SQ040	SQ040006B	SQ040033B	63 A	50 A
SQ063	SQ063006B	SQ063033B	80 A	75 A



(A) DIN rail 35 mm (EN 50022-35)

This configuration allows both base mounting and DIN mounting.

Marking: CE, UL, UKCA

Dimensions in mm / illustrations NOT in scale

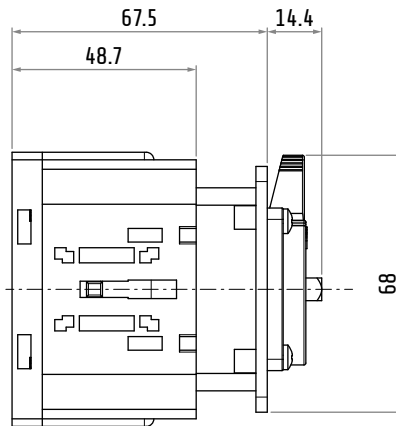
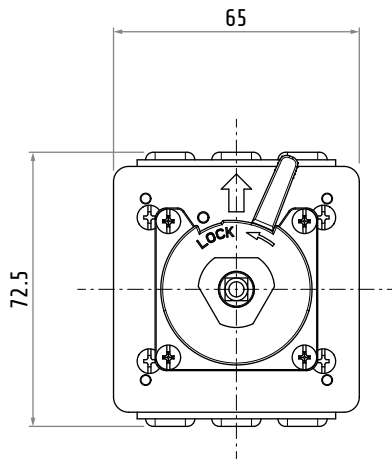
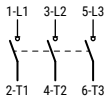
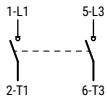
Type X



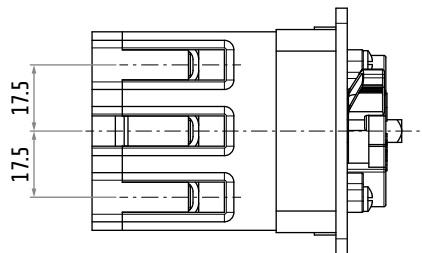
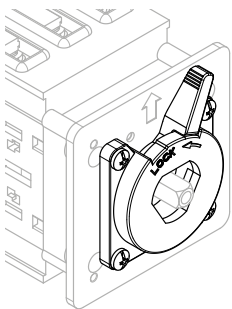
- rear panel mounting
- Ø 22.5 central hole fixing panel

- 2 or 3 poles

Series	2 poles	3 poles	AC-21A 690 V	AC-23A 400 V
SQ040	SQ040002X	SQ040003X	63 A	50 A
SQ063	SQ063002X	SQ063003X	80 A	75 A



(B) Lever fixing Ø 22



Marking: CE, UL, UKCA

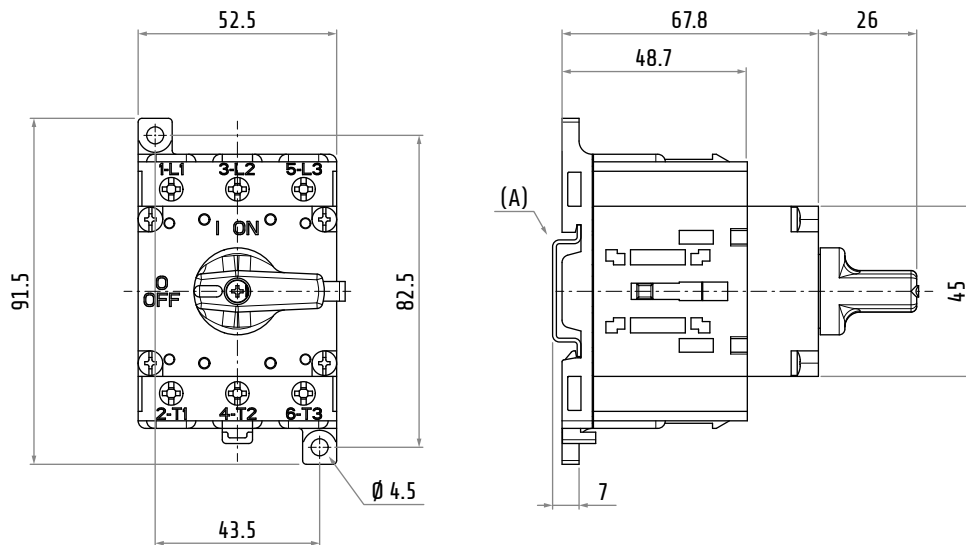
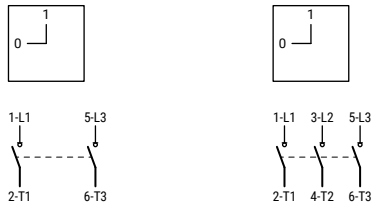
Type D - L2N

- base mounting
- DIN rail 35 mm mounting (EN 50022-35)

- black knob locking in "0-OFF" position
- 2 or 3 poles

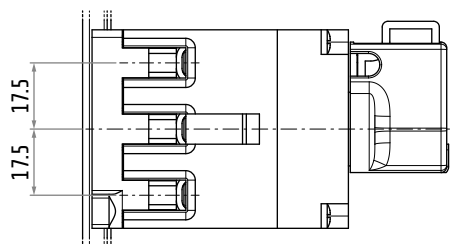


Series	2 poles	3 poles	AC-21A 690 V	AC-23A 400 V
SQ040	SQ040002DL2N	SQ040003DL2N	63 A	50 A
SQ063	SQ063002DL2N	SQ063003DL2N	80 A	75 A



(A) DIN rail 35 mm (EN 50022-35)

This configuration allows both base mounting and DIN mounting.



Marking: CE, UL, UKCA

ACTUATORS

Actuator code reading

0	4	9	/	0	0	0	1
Actuator				Wording			

Switch disconnectors / actuators matrix

Type	R		R		X	B		B		D - L2N
Mounting	panel		panel		panel	base		base		base
Poles	2 / 3		6	3 + 3 *	2 / 3	2 / 3		6	3 + 3 *	-
ACTUATOR										
67x67 Grey/Black padlock				-					-	-
screw Ø 22	319/...	319/...	319/...	-	-	321/...	321/...	321/...	-	-
	-	-	-	-	-	-	-	-	-	-
67x67 Yellow/Red padlock				-					-	-
screw Ø 22	320/...	320/...	320/...	-	-	322/...	322/...	322/...	-	-
	-	-	-	-	-	-	-	-	-	-
67x67 Grey/Black padlock	-	-	-		-	-	-	-	-	-
screw Ø 22	-	-	-	089X/...	-	-	-	-	-	-
	-	-	-	-	-	-	-	-	-	-
67x67 Yellow/Red padlock	-	-	-		-	-	-	-	-	-
screw Ø 22	-	-	-	090X/...	-	-	-	-	-	-
	-	-	-	-	-	-	-	-	-	-
Ø78 Grey/Black padlock				-					-	-
screw Ø 22	309/...	309/...	309/...	-	-	311/...	311/...	311/...	-	-
	-	-	-	-	-	-	-	-	-	-
Ø78 Yellow/Red padlock				-					-	-
screw Ø 22	310/...	310/...	310/...	-	-	312/...	312/...	312/...	-	-
	-	-	-	-	-	-	-	-	-	-
WORDING									-	-
	...0001	...0001	...0008	...0001	...0001	...0001	...0001	...0008	-	-

* Changeover

ACCESSORIES

		Panel mounting		Base mounting	
Additional poles					
Additional pole NO			SQ040AFPR SQ063AFPR		SQ040AFPB SQ063AFPB
4th pole (early make contact)			SQ040ANIR SQ063ANIR		SQ040ANIB SQ063ANIB
Neutral terminal			SQ040ANPR SQ063ANPR		SQ040ANPB SQ063ANPB
Ground terminal			SQ040APER SQ063APER		SQ040APEB SQ063APEB
Auxiliary contacts					
Auxiliary contact 1 NC			SQ010AS3R		SQ010AS3B ⊕
Auxiliary contact 1 NO			SQ010AS4R		SQ010AS4B
Terminal protections					
Terminal protection for 3 poles			20900041		20900041
Terminal protection for 1 pole			20900040		20900040
Tools					
Fixing device			PCF		PCF
Shaft extension 6×6	L = 185 mm L = 300 mm		- -		20900010 (*) 20900011 (*)
Enclosures					
Thermoplastic enclosure	max 4 poles		-		BF4/DNG0
Metal enclosure	max 3 poles		BNA/ONGA		BNA/ONGA
Metal enclosure	max 4 poles		BNA/ENGA		BNA/ENGA

(*) SQ040...B and SQ063...B only.

