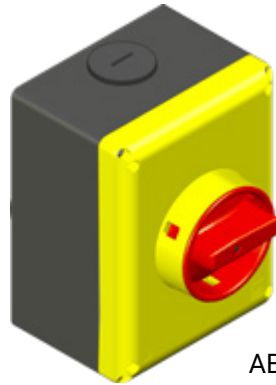




AB9

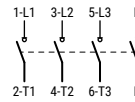
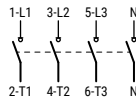
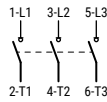
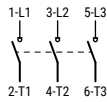


AB0

SE63...AB9/AB0 SE80...AB9/AB0 SE100...AB9/AB0

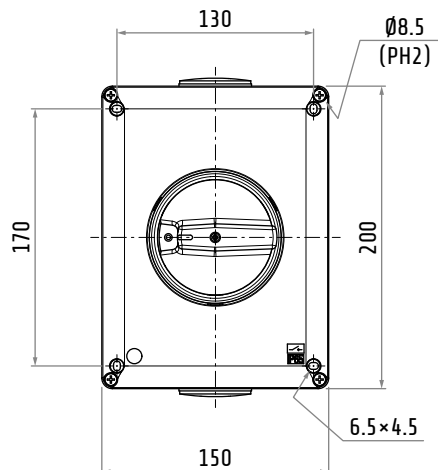
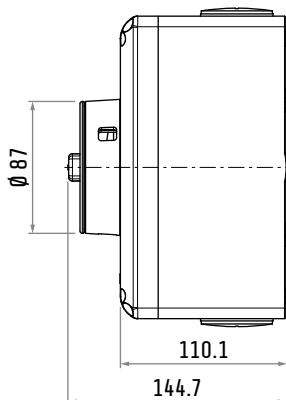
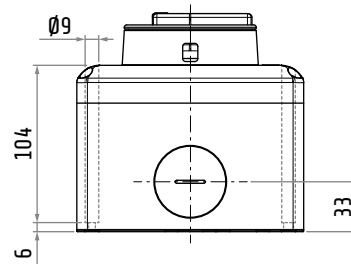
EGOLUS SWITCH DISCONNECTORS IN METAL ENCLOSURE (63 A / 80 A / 100 A)

| Series | 3 poles (C41) | 3 poles (C41) | 4 poles (C42) | 4 poles (C42) | AC-21A 690 V | AC-23A 400 V |
|--------|---------------|---------------|---------------|---------------|-----------------|-----------------|
| SE63 | SE630003BAB9 | SE630003BAB0 | SE630004BAB9 | SE630004BAB0 | 63 A | 50 A |
| SE80 | SE800003BAB9 | SE800003BAB0 | SE800004BAB9 | SE800004BAB0 | 80 A | 60 A |
| SE100 | SE1000003BAB9 | SE1000003BAB0 | SE1000004BAB9 | SE1000004BAB0 | 100 A | 67 A |



Enclosure features

- Material: metal
- IP rating: IP65
- Double insulation
- Enclosure opening in "0" position
- Cable entry: 2 × M20 plugs
- Locking facility in "0 - OFF" (max 3 padlocks)
- Dimensions: 150×200×110 mm
- AB9: black box, grey cover and black knob
- AB0: black box, yellow cover and red knob
- Marking: CE



Dimensions in mm / illustrations NOT in scale

SWITCH DISCONNECTORS SPECIFICATIONS

General characteristics

| | | | |
|---------------------|------------------------|--------------------|--|
| Connections | terminal block caliber | EN60947-1 | A8 |
| | terminal screw | | M5 |
| | tightening torque | EN60947-1 UL508 | 3 N·m 32 lb·in (3.6 N·m) |
| Connectable section | flexible conductors | | 6 ... 25 mm ² / AWG 10 ... 2 |
| | solid conductors | | 10 ... 35 mm ² / AWG 10 ... 2 |
| Contacts | | | slow action, double breaking |

EN 60947-3 characteristics

| | | | SE63... | SE80... | SE100... |
|---|------------------|--|---------|---------|----------|
| Rated operating voltage | U _e | | 690 V | 690 V | 690 V |
| Rated insulation voltage | U _i | | 690 V | 690 V | 690 V |
| Rated impulse withstand voltage (sectionable) | U _{imp} | | 8 kV | 8 kV | 8 kV |
| Rated thermal current | I _{th} | | 63 A * | 86 A * | 100 A |
| Rated enclosed thermal current | I _{the} | | 86 A * | 86 A * | 86 A |
| Frequency | | | 50 Hz | 50 Hz | 50 Hz |

Rated operating current (I_e)

| | | | SE63... | SE80... | SE100... |
|--------|--------------------|-------|---------|---------|----------|
| AC-21A | | 690 V | 63 A * | 80 A * | 100 A |
| AC-22A | | 690 V | - | - | 100 A |
| AC-23A | 3 phases - 3 poles | 400 V | 50 A | 63 A | 70 A |
| AC-3 | 3 phases - 3 poles | 400 V | 40 A | 50 A | 55 A |

Short circuit characteristics

| | | | SE63... | SE80... | SE100... |
|--|-----------------|--|---------|---------|----------|
| Rated short-time short circuit withstand current (1 s) | I _{cw} | | 1500 A | 1500 A | 1500 A |
| Rated short circuit making capacity | I _{cm} | | 2840 A | 2840 A | 2840 A |
| Conditional rated short circuit withstand current | | | 10 kA * | 10 kA * | 10 kA |
| Fuse rating (type gG) | 500 V | | - | - | 100 A |
| | 690 V | | 80 A * | 80 A * | - |

UL508 characteristics

| | | | SE63... | SE80... | SE100... |
|---------------------|--------------------|----------|---------|---------|----------|
| General use | | 600 V AC | 63 A | 80 A | 100 A |
| Standard motor load | 1 phase - 2 poles | 120 V AC | 3 HP | 3 HP | 3 HP |
| | 3 phases - 3 poles | 240 V AC | 10 HP | 10 HP | 10 HP |

* IMQ values.