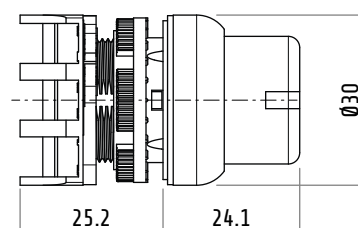
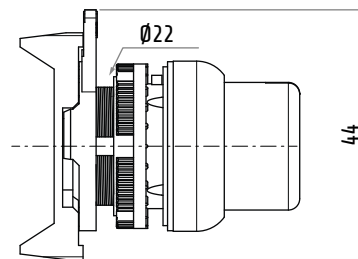
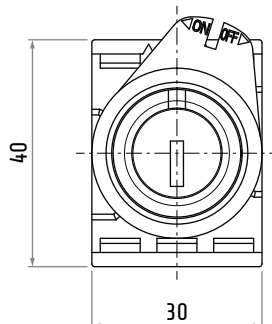


PSCR8...GL

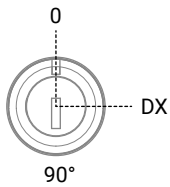
PSCR8...GL

ORION SERIES GREY LINE ROTARY SWITCH WITH KEY

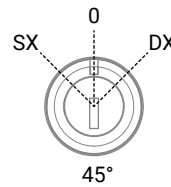
Series	Orion
Line	Nickel Line
Type	rotary switch
Operator	key
Fixing	Ø22
Panel thickness	1 ... 6 mm
Drilling template compliance	IEC/EN60947-5-1 CENELEC EN50007
Mechanical life	1×10 ⁶ operations
IP rating	IP65
Material	thermoplastic
Marking	CE, UKCA



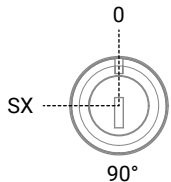
Dimensions in mm / Illustrations NOT in scale



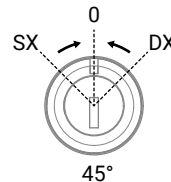
Key extraction			
SX	0	DX	
	●		PSCR8D0CGL
		●	PSCR8D0EGL
	●	●	PSCR8D0NGL



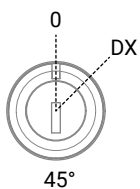
Key extraction			
SX	0	DX	
	●		PSCR8TOCGL
●			PSCR8TOAGL
		●	PSCR8TOEGL
●	●	●	PSCR8TOGGL
●	●		PSCR8TOHGL
●		●	PSCR8TOKGL
	●	●	PSCR8TONGL



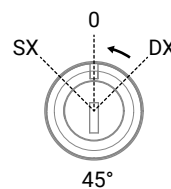
Key extraction			
SX	0	DX	
	●		PSCR8SDCGL
●			PSCR8SDEGL
●	●		PSCR8SDNGL



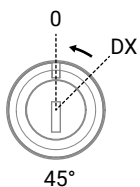
Key extraction			
SX	0	DX	
	●		PSCR8T3CGL



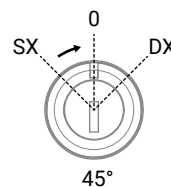
Key extraction			
SX	0	DX	
	●		PSCR8D1CGL
		●	PSCR8D1EGL
	●	●	PSCR8D1NGL



Key extraction			
SX	0	DX	
	●		PSCR8T2CGL
		●	PSCR8T2AGL
	●	●	PSCR8T2HGL



Key extraction			
SX	0	DX	
	●		PSCR8D2CGL



Key extraction			
SX	0	DX	
	●		PSCR8T1CGL
●			PSCR8T1EGL
●	●		PSCR8T1NGL