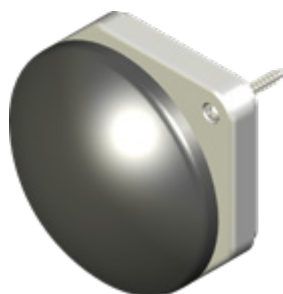


PR1M9W01 (NC)





PR8M9W10 (NO)

PR1M9W01 PR8M9W10

Ø90 MUSHROOM PUSH BUTTON WITH PANEL FIXING, MOMENTARY OPERATION

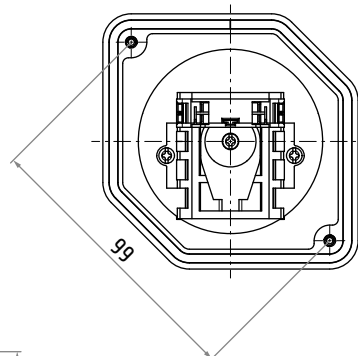
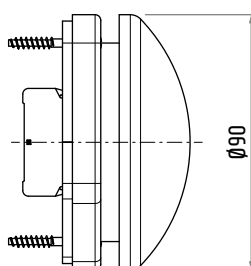
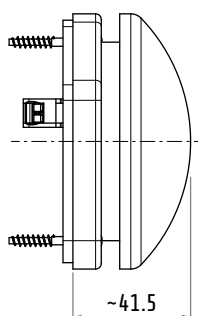
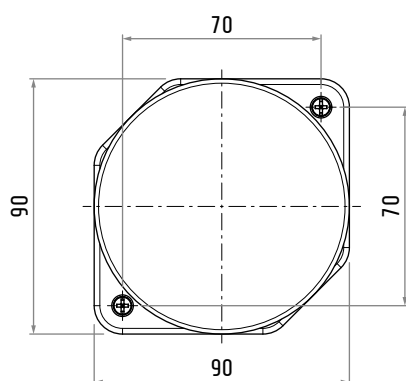
Type	momentary push button
Operator	Ø90 mushroom
Fixing	panel
Marking	CE

Code	Contact	Color
PR1M9W01	 normally closed (1 NC)	cover: yellow cap: red
PR8M9W10	 normally closed (1 NO)	cover: gray cap: black

Contact operation	slow action double breaking
Contact terminal type	spring
Connectable section	0.5 ... 2.5 mm ² 18 ... 12 AWG
Wire peeling length	8 mm

Rated insulation voltage	Ui	690 V *
Rated impulse withstand voltage	Uimp	4 kV *
Rated thermal current	Ith	16 A *
Rated enclosed thermal current	Ithe	10 A
Frequency		50/60 Hz

* IMQ approved values



Dimensions in mm
Illustrations NOT in scale