

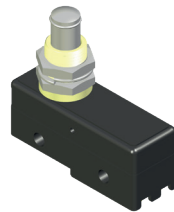
MZW1300



MZW1306



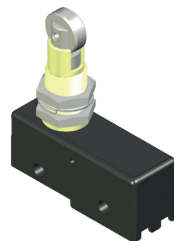
MZW1301



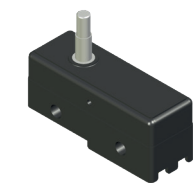
MZW1307



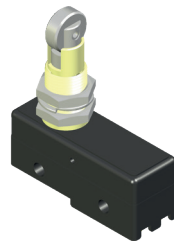
MZW1303



MZW1308



MZW1305



MZW1318

# MZW13...

## MICROSWITCH WITH SOLDER TERMINAL AND STANDARD ACTUATOR

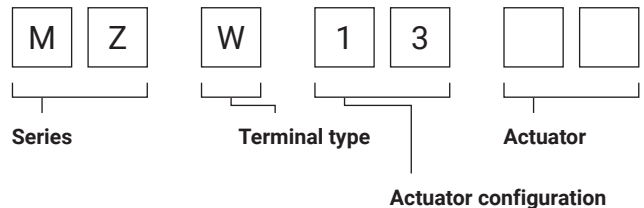
Microswitch

Terminal: solder

Actuator: standard

Contacts: 1 NC + 1 NO (snap action)

Marking: CE, UL, UKCA


**Series**

MZ microswitches

**Terminal type**

W solder

**Actuator configuration**

13 standard

**Actuator**

00 short plunger Ø2.3

01 bending lever

03 bending lever with roller

05 long plunger Ø4

06 short plunger Ø7.2

07 panel mount plunger

08 panel mount roller plunger

18 panel mount cross roller plunger

**Rating**

Rated contact voltage	UL61058	125	250	VAC	125	250	VDC
Maximum contact current		15	15	A	0.5	0.25	A

**Electrical characteristics**

Maximum contact resistance	initial	15 mΩ
Minimum insulation resistance	at 500 VDC	100 MΩ
Dielectric withstanding voltage	for 1 minute	1000 VAC (50 or 60 Hz)

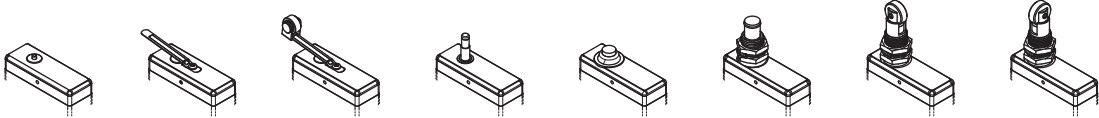
**Mechanical characteristics**

Operating speed	0.1 mm/s ... 1 m/s
Operating frequency	30 operations per minute
Vibration	10 ... 55 Hz, 1.5 mm double amplitude
Minimum operating life	electrical mechanical
	100000 cycles 1000000 cycles

**Climatic characteristics**

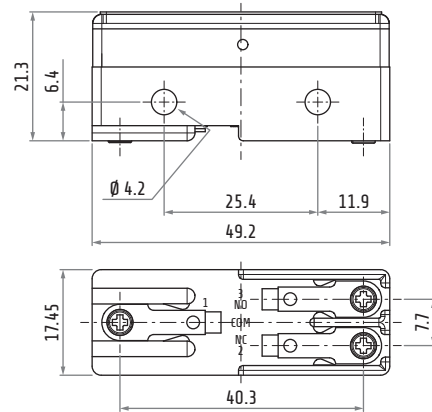
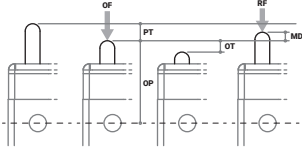
Operating temperature	UL certified	0 ... +55°C (maximum humidity of 60%)
Degree of protection	with accessory	IP40

# MZW13...

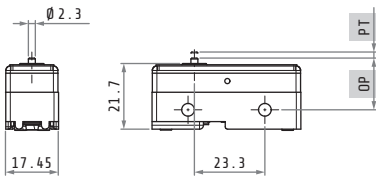


		MZW1300	MZW1301	MZW1303	MZW1305	MZW1306	MZW1307	MZW1308	MZW1318	
OF	max	250 ... 350	141	141	250 ... 350	250 ... 350	250 ... 350	250 ... 350	250 ... 350	g
RF	min	114	14	14	114	114	114	114	114	g
PT	max	0.4	4	4	0.4	0.4	0.4	0.4	0.4	mm
OT	min	0.13	1.6	1.6	1.6	1.6	5.5	3.58	3.58	mm
MD	max	0.10	1.3	1.3	0.10	0.10	0.10	0.10	0.10	mm
FP	max	-	20.6	31.8	-	-	-	-	-	mm
OP		15.9 ±0.4	17.4 ±0.8	28.6 ±0.8	28.2 ±0.5	21.5 ±0.5	21.8 ±0.8	33.4 ±1.2	33.4 ±1.2	mm

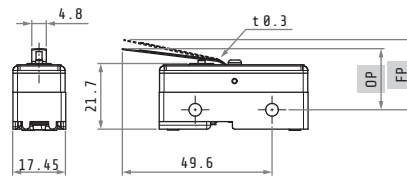
- OF Operating force
- RF Release force
- PT Pretravel
- OP Operating position
- OT Overtravel
- MD Differential movement



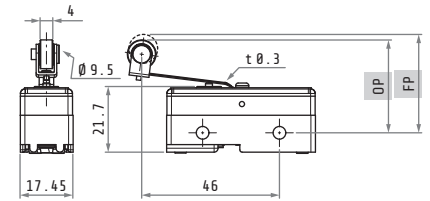
Screw mounting tightening torque: 1.2-1.5 N×m / 10.6-13.3 lb×in  
 Panel mounting tightening torque: 3.0-5.0 N×m / 26.6-44.3 lb×in



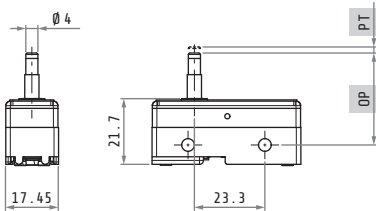
MZW1300



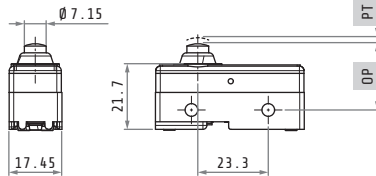
MZW1301



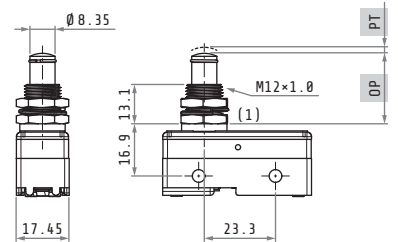
MZW1303



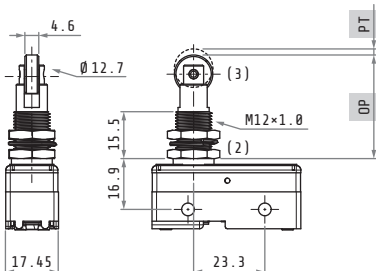
MZW1305



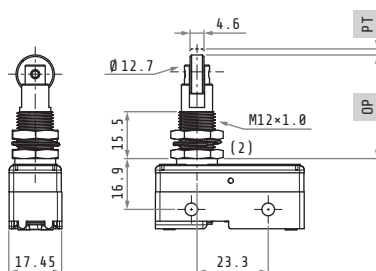
MZW1306



MZW1307



MZW1308



MZW1318

Dimensions in mm  
 Illustrations NOT in scale

- (1) 2 hexagonal brass nuts 3×15 mm
- (2) 2 hexagonal nuts 3×17 mm
- (3) Stainless steel roller