

MFI

MICROSWITCHES WITH 6.3 × 0.8 MM FASTON TERMINALS

Microswitch

Contacts: 1 NC + 1 NO (snap action)

Compliance: IEC/EN61058, UL1054

Marking: CE, UL, CCC, UKCA

Series

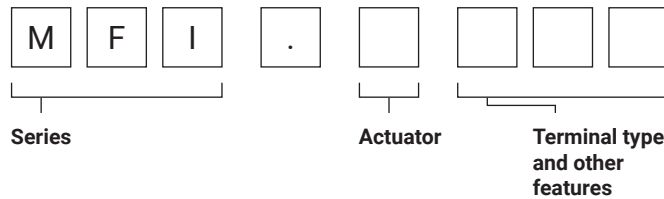
MFI microswitches

Actuator

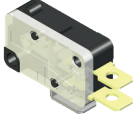
- blank pin plunger
- 1 long roller lever
- 2 simulated roller lever
- 3 roller lever
- 4 long lever
- 5 medium lever
- 6 short lever
- 7 16 mm roller lever

Terminal type and other features

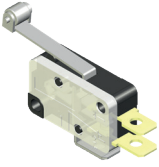
blank 6.3 × 0.8 mm faston



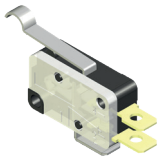
MFI



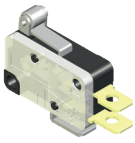
MFI.1



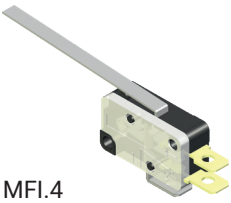
MFI.2



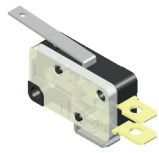
MFI.3



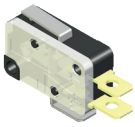
MFI.4



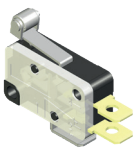
MFI.5



MFI.6

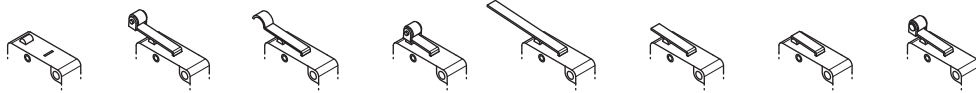


MFI.7



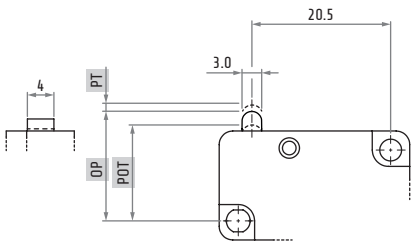
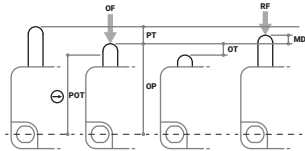
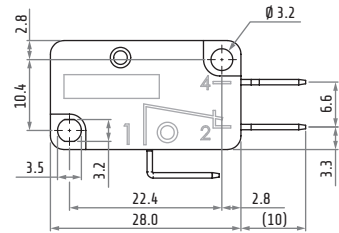
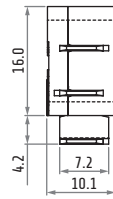
Operating temperature		-25 ... +85°C -13 ... +185°F
Minimum life expectancy		
mechanical		1 × 10 ⁶ cycles
electrical		5 × 10 ⁵ cycles
Rated thermal current	I _{th}	8 A
Rated insulation voltage	U _i	250 V
Rated impulse withstand voltage	U _{imp}	1500 V
Rated operating current	ie	
resistive load		8 A - 250 V
inductive load		3 A - 250 V
Pollution degree		2
Protection against electric shock		class II

MFI

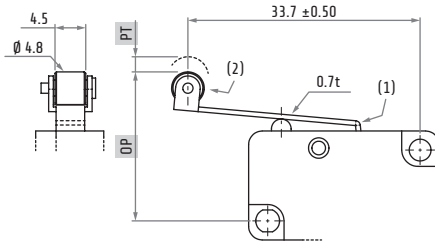


		MFI	MFI.1	MFI.2	MFI.3	MFI.4	MFI.5	MFI.6	MFI.7	
OF	max	5.1	3.2	3.2	5.1	1.3	3.2	5.1	4.5	N
RF	min	1.9	1.0	1.0	1.9	0.15	1.2	1.9	1.9	N
PT	max	1.4	3.3	3.3	1.4	7.6	3.3	1.6	1.8	mm
OT	min	0.8	0.8	0.8	0.6	2.2	0.8	0.6	0.8	mm
MD	max	0.3	0.8	0.8	0.6	2.2	0.8	0.6	0.6	mm
OP		14.4 ±0.5	20.3 ±1.2	18.4 ±1.2	20.3 ±0.8	15.1 ±2.6	15.1 ±1.2	15.1 ±0.6	21.1 ±0.6	mm
POT	⊖	13.4	-	-	19.2	-	-	14.2	19.5	mm

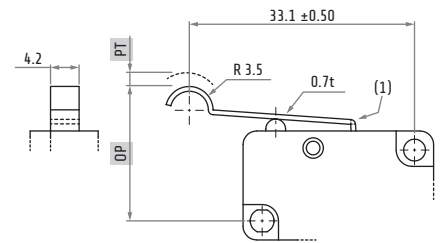
- OF Operating force
- RF Release force
- PT Pretravel
- OT Overtravel
- MD Differential movement
- OP Operating position
- POT Positive opening travel ⊖



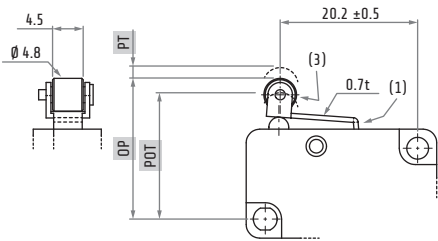
MFI



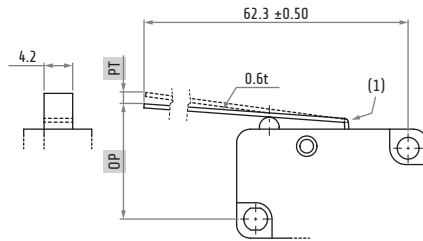
MFI.1



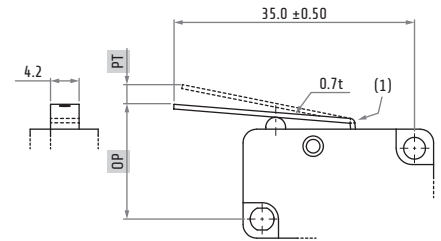
MFI.2



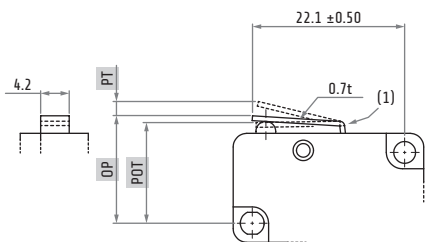
MFI.3



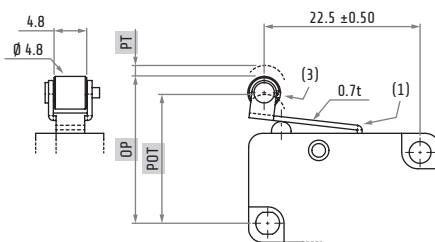
MFI.4



MFI.5



MFI.6



MFI.7

Dimensions in mm
Illustrations NOT in scale

- (1) Stainless steel lever
- (2) Plastic material roller
- (3) Stainless steel roller