



GSL30... GSL60...

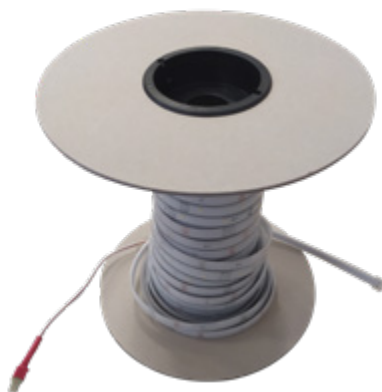
PRE-WIRED STRIP LED

Kit composition

with GSL30	with GSL60	strip LED length
GSL30012	GSL60012	12 metri
GSL30015	GSL60015	15 metri
GSL30018	GSL60018	18 metri
GSL30021	GSL60021	21 metri
GSL30024	GSL60024	24 metri
GSL30029	GSL60029	29 metri
GSL30040	GSL60040	40 metri
GSL30060	GSL60060	60 metri



2 × tensioners

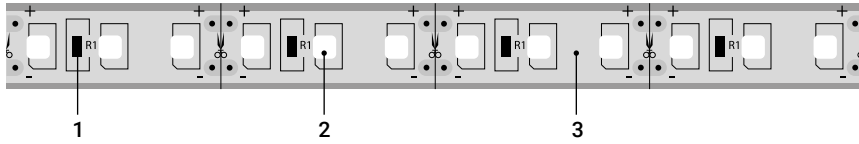
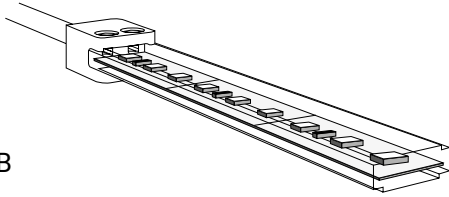


strip LED of chosen type
and length

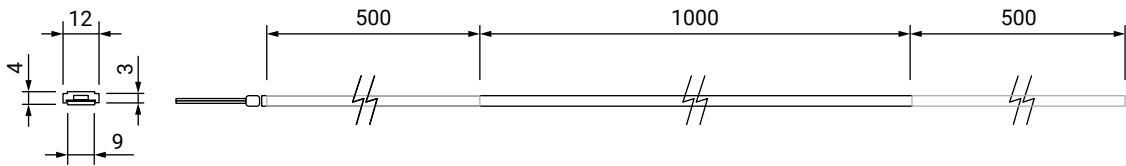


power cord

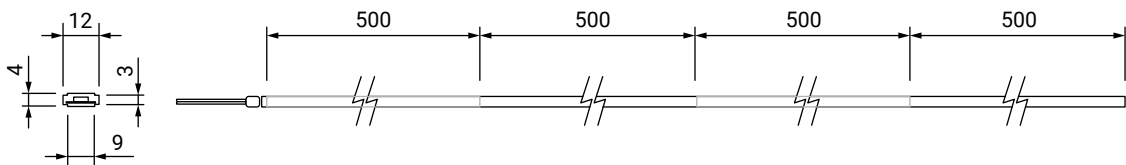
1. Resistance
2. LED
3. Flexible PCB



GSL30

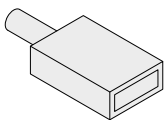


GSL60



	GSL30	GSL60
Voltage	230 V ac $\pm 15\%$	230 V ac $\pm 15\%$
Power	5 W/m	6.4 W/m
Flux	450 lm/m	600 lm/m
Protection *	IP 65	IP 65
Operating temperature	-40 ... +70°C	-40 ... +70°C
Flame retardant class	UL94 V1	V1
UV class	UL94 F1	F1
Dimmable & flickerless with	PF > 0.85	PF > 0.85
Beam angle	120°	120°
Color	pure white 6000-6500K	pure white 6000-6500K
Shaft area	EN-81 3.5 m ²	9.2 m ²
Maximum powered length	150 m	150 m
Cutting points distance	1.5 m	1 m

* With accessories GSLC002, GSLC003 e GSLC004 (not included).



GSLC002
Profiled silicone end cap for power



GSLC003
Profiled silicone end cap terminations



GSLC004
Profiled screw set