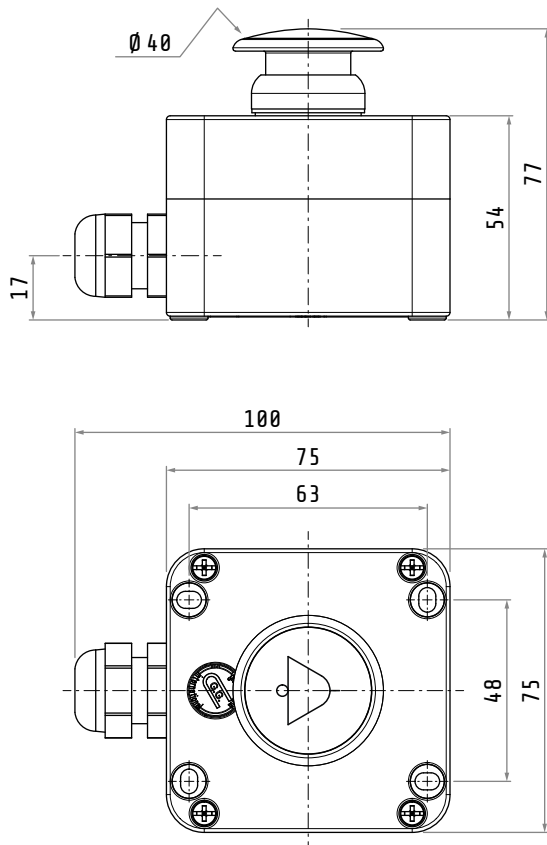


# GMS169

**STATION WITH ALARM YELLOW BUTTON  
AND WHITE LED**

## Specifications



Material / color	cover: PC V0 transparent base: ABS V0 black RAL9005
Protection class	IP65
Operating temperature	-25°C ... +70°C
Max current	100 mA
Max power	2.4 W
Standards	EN81-20 / EN81-50
Cable gland	M16
Knockout	M20
Light diffusion angle	120°

1 contact block NO (spring contacts)		
Rated insulation v oltage	Ui	690 V *
Rated impulse withstand voltage	Uimp	4 kV *
Frequency		50/60 Hz *
Rated thermal current	Ith	16 A *
Rated operating current	Ithe	10 A

Marking

\* IMQ approved values

Electronic PCB		
LED color	fixed	white
Rated voltage		12/24 VDC

Dimensions in mm / illustrations NOT in scale