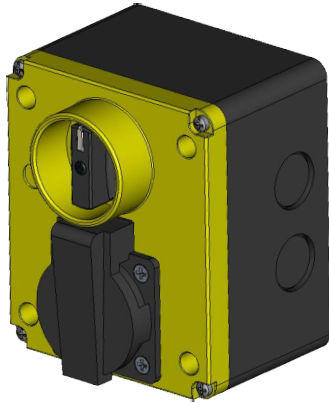




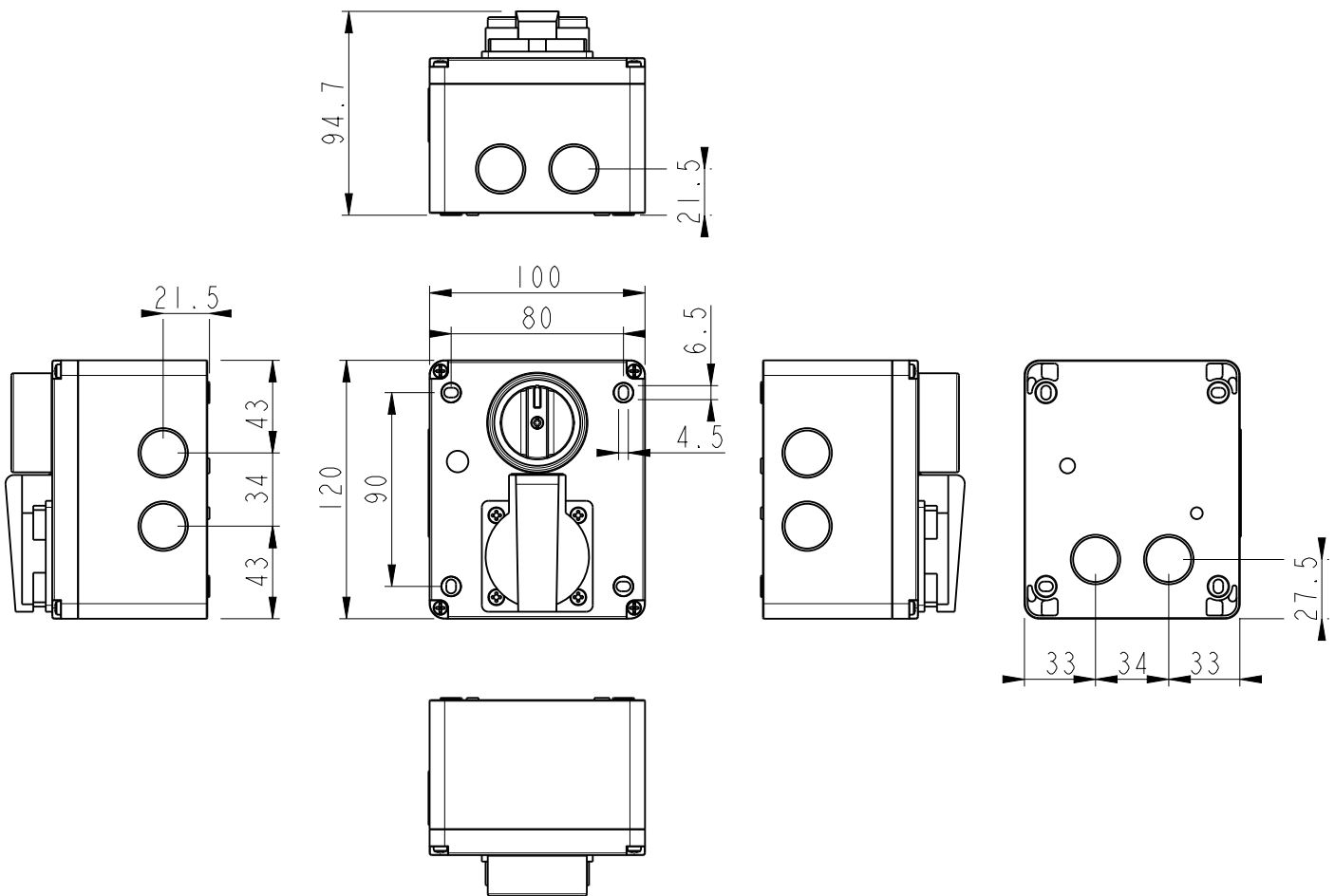
GM243/EU



CONTROL STATION WITH SHAFT LIGHT DEVICE AND SOCKET

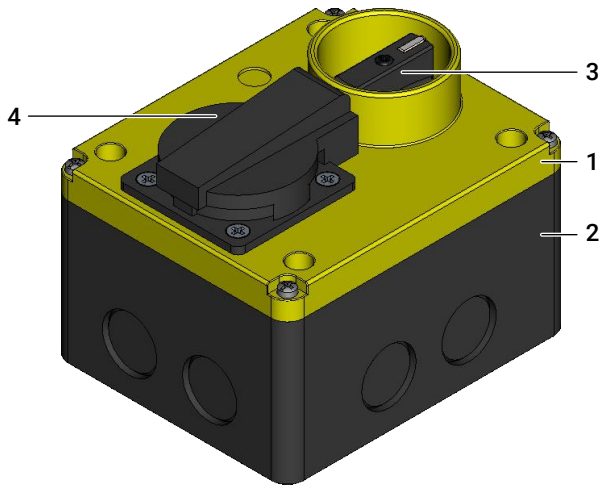
Specifications

Case	ABS/PC-ABS
Protection class IEC/EN 60529	IP54
Knockout	8 × Ø 23 mm



Dimensions in mm / Illustrations NOT in scale

Structure



1	Cover
2	Base
3	Black knob Ø34 (1 cam switch)
4	Socket outlet (EU)

Cam switch Technical data



Terminal screw	M3.5	
Screwing torque	EN60947-1	0.8 Nm (7.2 lb. in.)
	UL508	7.5 lb. in. (0.85 Nm)
Connectable section	Flexible	1 × 0.75 / 4 ... 2 × 0.75 / 2.5 mm ²
	conductors	10 ... 18 AWG
Solid		1 × 0.75 / 4 ... 2 × 0.75 / 2.5 mm ²
	conductors	10 ... 18 AWG

IEC/EN 60947-3 characteristics

Rated operating voltage [Ue]	690 V
Rated insulation voltage [Ui]	690 V
Rated impulse withstand voltage [Uimp]	4 kV
Rated thermal current [Ith]	20 A
Rated thermal current in enclosure [Ithe]	16 A
Frequency	50/60 Hz
Marking	UL - CSA - EAC

1	2-4	bridge		X
	1-L		X	
cell	contacts		0	1
			positions	

X - Closed contact

Schuko socket



Protection class	IP54
Electrical characteristics	250 V / 16 A
Standards	IEC 309
Certifications	CE