



The product is installed in these energy transmission lines:

TR60 continuous

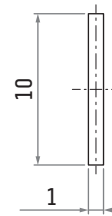
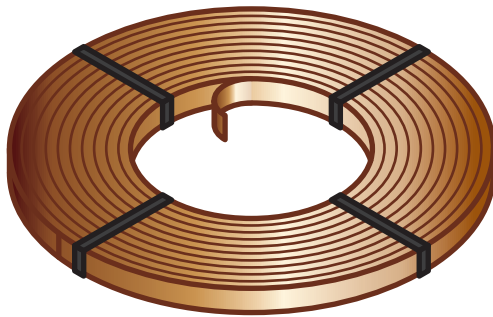


Please find the relevant reference guides on our instruction manuals page:

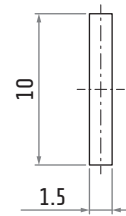
<https://www.giovenzana.com/leaflets/>

CS40 / CS60

CONDUCTORS



CS40

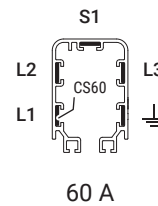
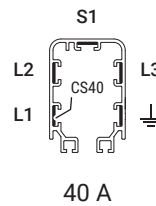
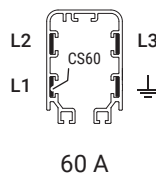
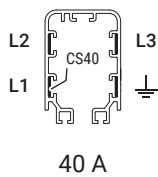


CS60

Length on request

| | | CS40 | CS60 |
|---|----------------|---------------------------------|-----------------------------------|
| Material | | ETP copper | ETP copper |
| Rated current | 23°C | 40 A | 60 A |
| Rated operating voltage | U _e | 600 V AC | 600 V AC |
| Frequency | | 50 Hz | 50 Hz |
| Short circuit current | | 10 kA | 10 kA |
| Class gG fuses | | 40 A | 60 A |
| Conductors section | | 10 mm ² 10 × 1 mm | 15 mm ² 10 × 1.5 mm |
| Resistance | | 17·10 ⁻⁴ Ω/m | 11.33·10 ⁻⁴ Ω/m |
| Impedence | | 17.09·10 ⁻⁴ Ω/m | 11.38·10 ⁻⁴ Ω/m |
| Weight of busbar complete of conductors | | ~90 g/m | ~135 g/m |

Possible configurations



Dimensions in mm
Illustrations NOT in scale