



The product is installed in these energy transmission lines:

Festoon System Line 41

Please find the relevant reference guides on our instruction manuals page:

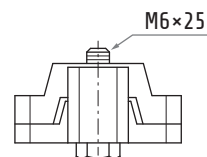
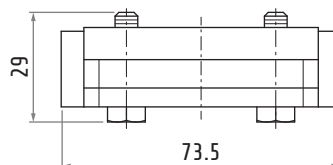
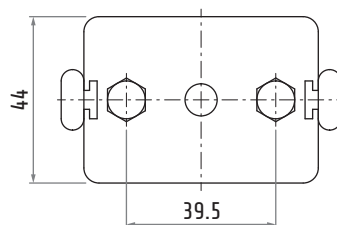
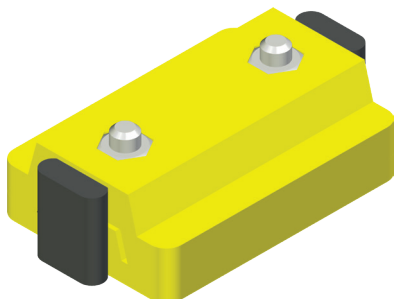
<https://www.giovenzana.com/leaflets/>

INSTRUCTION  
MANUALS



# 30602038

## LINE END STOP



Material	body	nylon
	hardware	galvanized steel
Weight	~70 g	