



The product is installed in these energy transmission lines:

Festoon System Line 41

Please find the relevant reference guides on our instruction manuals page:

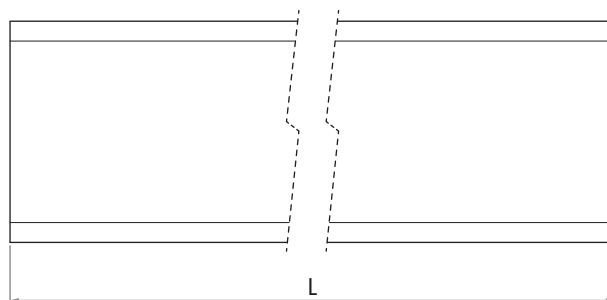
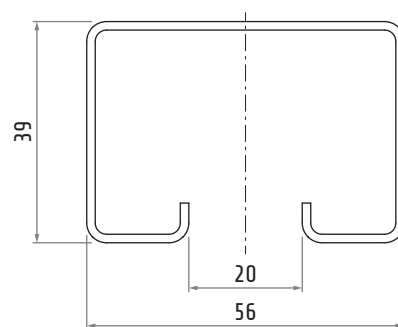
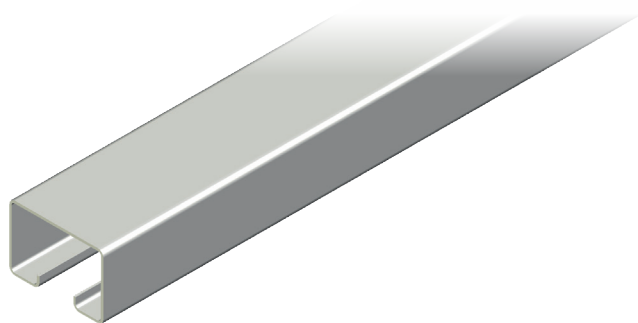
<https://www.giovenzana.com/leaflets/>

INSTRUCTION
MANUALS



30602001/4

C-RAIL BAR



Custom curved bars available on request
(minimum radius 1500 mm)

Material		galvanized steel
Standard length	L	4 m
Thickness		1.5 mm
Weight		~2.0 kg/m

Standard 90° curve		30602054
Radius		1500 mm
Weight		~1.2 kg